

Risk Factors and Outcomes for Late Presentation for HIV-Positive Persons in Europe: Results from the Collaboration of Observational HIV Epidemiological Research Europe Study (COHERE)

Amanda Mocroft^{1*}, Jens D. Lundgren^{2,3}, Miriam Lewis Sabin², Antonella d'Arminio Monforte⁴, Norbert Brockmeyer⁵, Jordi Casabona⁶, Antonella Castagna⁷, Dominique Costagliola^{8,9}, Francois Dabis^{10,11}, Stéphane De Wit¹², Gerd Fätkenheuer¹³, Hansjakob Furrer¹⁴, Anne M. Johnson¹, Marios K Lazanas¹⁵, Catherine Leport^{16,17}, Santiago Moreno¹⁸, Niels Obel³, Frank A. Post¹⁹, Joanne Reekie^{1,20}, Peter Reiss^{21,22}, Caroline Sabin¹, Adriane Skaletz-Rorowski²³, Ignacio Suarez-Lozano²⁴, Carlo Torti^{25,26}, Josiane Warszawski²⁷, Robert Zangerle²⁸, Céline Fabre-Colin^{29,30}, Jesper Kjaer², Genevieve Chene^{29,30}, Jesper Grarup², Ole Kirk^{2,3}, for the Late Presenters Working Group on behalf of the Collaboration of Observational HIV Epidemiological Research Europe (COHERE) study in EuroCoord¹

1 Department of Infection and Population Health, University College London, London, United Kingdom, **2** Copenhagen HIV programme, University of Copenhagen, Copenhagen, Denmark, **3** Department of Infectious Diseases, Copenhagen University Hospital/Rigshospitalet, Copenhagen, Denmark, **4** Department of Health Sciences, Institute of Infectious Diseases, Milan, Italy, **5** Department of Dermatology, Venerology, and Allergology, St. Josef Hospital, Ruhr-Universität Bochum, Bochum, Germany, **6** CEEISCAT (Agència de Salut Pública de Catalunya) and CIBERESP, Badalona, Catalonia, Spain, **7** Department of Infectious Diseases IRCCS San Raffaele, Milan, Italy, **8** UPMC Université Paris 06, UMR_S 943, Paris, France, **9** INSERM, UMR_S 943, Paris, France, **10** Université de Bordeaux, ISPED, Centre Inserm, U897-Epidémiologie-Biostatistiques, Bordeaux, France, **11** Inserm U897-Epidémiologie-Biostatistiques, Bordeaux, France, **12** Saint-Pierre Hospital, Brussels, Belgium, **13** Universität Köln, Cologne, Germany, **14** Department of Infectious Diseases, Bern University Hospital and University of Bern, Bern, Switzerland, **15** 3rd Internal Medicine Department and Infectious Disease Unit, Red Cross General Hospital of Athens, Greece, **16** Université Paris Diderot, Sorbonne Paris Cité, UMR 738, Paris, France, **17** INSERM, UMR 738, Paris, France, **18** Department of Infectious Diseases, University Hospital Ramón y Cajal, IRYCIS, Madrid, Spain, **19** Kings College London School of Medicine, London, United Kingdom, **20** The Kirby Institute, University of New South Wales, Sydney, Australia, **21** Academisch Medisch Centrum bij de Universiteit van Amsterdam, Amsterdam, The Netherlands, **22** Stichting HIV Monitoring, Amsterdam, The Netherlands, **23** German Competence Network for HIV/AIDS, St. Josef Hospital, Ruhr-Universität Bochum, Bochum, Germany, **24** Infectious Diseases Unit, Complejo Hospitalario de Huelva, Spanish VACH Cohort, Spain, **25** University Division of Infectious and Tropical Diseases, University and Spedali Civili of Brescia, Brescia, Italy, **26** Department of Medical and Surgical Sciences, Unit of Infectious Diseases, University "Magna Graecia," Catanzaro, Italy, **27** INSERM CESP U1018, Université Paris-Sud, AP-HP Public Health Department, Le Kremlin-Bicêtre, France, **28** Medical University Innsbruck, Innsbruck, Austria, **29** Université de Bordeaux, ISPED, Centre INSERM U897-Epidémiologie Statistique, Bordeaux, France, **30** INSERM, ISPED, Centre INSERM U897-Epidémiologie Statistique, Bordeaux, France

Abstract

Background: Few studies have monitored late presentation (LP) of HIV infection over the European continent, including Eastern Europe. Study objectives were to explore the impact of LP on AIDS and mortality.

Methods and Findings: LP was defined in Collaboration of Observational HIV Epidemiological Research Europe (COHERE) as HIV diagnosis with a CD4 count <350/mm³ or an AIDS diagnosis within 6 months of HIV diagnosis among persons presenting for care between 1 January 2000 and 30 June 2011. Logistic regression was used to identify factors associated with LP and Poisson regression to explore the impact on AIDS/death. 84,524 individuals from 23 cohorts in 35 countries contributed data; 45,488 were LP (53.8%). LP was highest in heterosexual males (66.1%), Southern European countries (57.0%), and persons originating from Africa (65.1%). LP decreased from 57.3% in 2000 to 51.7% in 2010/2011 (adjusted odds ratio [aOR] 0.96; 95% CI 0.95–0.97). LP decreased over time in both Central and Northern Europe among homosexual men, and male and female heterosexuals, but increased over time for female heterosexuals and male intravenous drug users (IDUs) from Southern Europe and in male and female IDUs from Eastern Europe. 8,187 AIDS/deaths occurred during 327,003 person-years of follow-up. In the first year after HIV diagnosis, LP was associated with over a 13-fold increased incidence of AIDS/death in Southern Europe (adjusted incidence rate ratio [aIRR] 13.02; 95% CI 8.19–20.70) and over a 6-fold increased rate in Eastern Europe (aIRR 6.64; 95% CI 3.55–12.43).

Conclusions: LP has decreased over time across Europe, but remains a significant issue in the region in all HIV exposure groups. LP increased in male IDUs and female heterosexuals from Southern Europe and IDUs in Eastern Europe. LP was associated with an increased rate of AIDS/deaths, particularly in the first year after HIV diagnosis, with significant variation across Europe. Earlier and more widespread testing, timely referrals after testing positive, and improved retention in care strategies are required to further reduce the incidence of LP.

Please see later in the article for the Editors' Summary.

Citation: Mocroft A, Lundgren JD, Sabin ML, Monforte Ad, Brockmeyer N, et al. (2013) Risk Factors and Outcomes for Late Presentation for HIV-Positive Persons in Europe: Results from the Collaboration of Observational HIV Epidemiological Research Europe Study (COHERE). *PLoS Med* 10(9): e1001510. doi:10.1371/journal.pmed.1001510

Academic Editor: Stephanie L. Sansom, Centers for Disease Control and Prevention, United States of America

Received February 20, 2013; **Accepted** July 29, 2013; **Published** September 3, 2013

Copyright: © 2013 Mocroft et al. This is an open-access article distributed under the terms of the Creative Commons Attribution License, which permits unrestricted use, distribution, and reproduction in any medium, provided the original author and source are credited.

Funding: The COHERE study group has received generic funding from Agence Nationale de Recherches sur le SIDA et les Hépatites Virales (ANRS), France; HIV Monitoring Foundation, The Netherlands; and the Augustinus Foundation, Denmark. COHERE receives funding from the European Union Seventh Framework Programme (FP7/2007–2013) under EuroCoord grant agreement n° 260694. A list of the funders of the participating cohorts can be found on the COHERE website at <http://www.cohere.org>. The funders had no role in study design, data collection and analysis, decision to publish, or preparation of the manuscript.

Competing Interests: AM has received lecture fees, honoraria, and/or consultancies from Pfizer, BI, BMS, Merck, and Gilead. Ad'A is an advisory board member of BMS, Janssen, Gilead, and ViiV. GF has received honoraria for lectures and advisory boards from Abbott, Bristol-Myers Squibb, Gilead, Janssen-Cilag, and Merck Sharp & Dohme. Research grant to GF from the German Federal Ministry of Education and Research (BMBF) 01KI1017. AJ is a Governor of the Wellcome Trust, a charitable research funding body; in 2011 was a specialist adviser to House of Lords Select Committee on HIV/AIDS; is a member of the UK Expert Advisory Group on AIDS; receives research grant funding from the UK Medical Research Council, Wellcome Trust, UK National Institute for Health Research, and Department of Health. CL has received these research grants: ANRS CMIT soutien (Aproco-Copilote ANRS CO08 HIV cohort, 1997–2012); IMMI (Cohort Fluco A(H1N1) pandemic influenza, 2009–2012); Ministère de la Santé PHRC (Bivir influenza trial, Oseltamivir Zanamivir, 2006–2012). CS has received funding for Advisory Board membership, speaker panels, and provision of educational materials for Gilead Sciences, Abbott Pharmaceuticals, ViiV, Merck Sharp & Dohme, Janssen-Cilag, and Bristol-Myers Squibb. CT has received honoraria to act as speaker at CME conferences on antiretroviral therapy and HIV disease management from several companies producing antiretroviral drugs, received travel grants to participate in scientific conferences, and acted as scientific consultant for the same companies. GC has had scientific responsibilities in projects receiving specific grant support from the French Agency for Research on AIDS and Viral Hepatitis (ANRS), the European Commission (Framework Program 7), UK Medical Research Council, US National Institute of Health (NIH), Fondation Plan Alzheimer, Gilead, Tibotec, Boehringer Ingelheim, GlaxoSmithKline, Roche, Pfizer, Merck, Abbott, Bristol-Myers Squibb, Janssen, ViiV Healthcare – these grants are managed through her Institution or a non-profit society. GC also serves as Academic Editor on PLOS ONE and is on the editorial board of the *BMC Infectious Diseases Journal*. OK has received honoraria, consultancy, lecture fees, and travel grants from Abbott Laboratories, Bristol-Myers Squibb, Gilead Sciences, Janssen, Merck Sharp & Dohme, Roche, and ViiV Healthcare, and has served/is serving on Advisory Boards for Gilead Sciences, Merck Sharp & Dohme, and ViiV Healthcare. No other competing interests have been declared.

Abbreviations: aIRR, adjusted incidence rate ratio; aOR, adjusted odds ratio; ART, antiretroviral therapy; COHERE, Collaboration of Observational HIV Epidemiological Research Europe; IDU, intravenous drug user; LP, late presentation; MSM, males having sex with males.

* E-mail: a.mocroft@ucl.ac.uk

¶ Membership of the Late Presenters Working Group and the Collaboration of Observational HIV Epidemiological Research Europe (COHERE) study is provided in the Acknowledgments.

Introduction

Approximately 40%–60% of HIV-positive persons in developed countries continue to be diagnosed with HIV at a late stage of infection [1]. According to the latest consensus definition from the HIV in Europe study group, late presenters are defined as persons presenting to a clinic that can prescribe antiretroviral therapy (ART) with a CD4 count of less than 350/mm³ or an AIDS defining illness [2], the current World Health Organization's recommended threshold for initiation of ART [3]. Late presentation, which may reflect late diagnosis and/or late entry into care, has consequences both for the individual, in terms of poorer outcomes [4–6], and for society in terms of the risk of onward transmission due to uncontrolled viremia and lack of awareness of HIV serostatus [7,8]. Late presentation also has an economic impact, with higher resource use, particularly in the first few months following presentation [9,10]. Barriers to testing from the patients perspective include concerns about the impact of a positive result, fears around discrimination, confidentiality, criminalisation of risk behaviours, and limited knowledge about accessing testing or treatment on testing positive [11]. Reported concerns by clinicians include language barriers, the belief that lengthy counselling is required, worry about informing individuals of a HIV-positive test result, and lack of knowledge about HIV and potential risk behaviours [12].

Many studies have presented data on late presentation, generally focusing on a specific country or region within a country and applying various definitions for late presentation. Data from Eastern Europe is particularly scarce and hence a Europe-wide perspective of late presentation using uniform definitions can help inform policy and decision making on future continent-wide HIV testing strategies. Such results will provide a platform for future monitoring of late presentation following appropriate interventions.

The Collaboration of Observational HIV Epidemiological Research Europe (COHERE) study provides a unique opportunity to describe the epidemiology of those testing HIV positive at a late stage of HIV infection compared to those testing earlier, and to look at regional differences within HIV exposure groups. The aims of the present analyses were to describe trends in late presentation over time in different regions of Europe and according to HIV exposure group, and to investigate the clinical consequences of late presentation.

Methods

Patients

COHERE is a collaboration of 33 cohorts from across Europe and is part of the EuroCoord network (www.EuroCoord.net). COHERE was established in 2005 with the aim of conducting epidemiological research on the prognosis and outcome of HIV-positive persons, which the individual contributing cohorts cannot address themselves because of sample size or heterogeneity of specific subgroups of HIV-positive persons. Local ethical committee and/or other regulatory approval were obtained as applicable according to local and/or national regulations in all participating cohorts unless no such requirement applied to observational studies according to national regulations. Each cohort submits data using the standardized HIV Collaboration Data Exchange Protocol (HICDEP) [13], including information on patient demographics, use of cART, CD4 counts, AIDS, and deaths. Further details can be found at http://www.eurocoord.net/partners/funding_networks/cohere.aspx.

Twenty three cohorts across 35 European countries provided data for the present analysis. All persons aged ≥16 y, who presented for care (earliest of HIV diagnosis, first clinic visit, or enrolment into the participating cohort) for the first time after 1

January 2000 until 1 January 2011 were included. Baseline was defined as the date of first HIV diagnosis, or the earliest of first clinic visit or cohort enrolment if date of HIV diagnosis was missing, referred to as date of HIV diagnosis. Persons were excluded if gender or HIV diagnosis was missing, if aged <16 y, or where there was evidence of an earlier HIV diagnosis (CD4 count, AIDS diagnosis, or starting ART) more than 1 mo prior to first clinic visit, as were persons from Argentinean centres in EuroSIDA and persons from the seroconverter cohorts in COHERE, because by definition, such persons are not presenting late.

Late presentation was defined as a person diagnosed with HIV with a CD4 count below 350/mm³ or an AIDS defining event regardless of the CD4 count, in the 6 mo following HIV diagnosis. Late presentation with advanced disease was defined as a person diagnosed with HIV with a CD4 count below 200/mm³ or an AIDS defining event, regardless of CD4 cell count, in the 6 mo following HIV diagnosis [2]. Delayed entry into care was defined as ≥ 3 mo between HIV diagnosis and first clinic visit, in those where both dates were recorded. All persons were required to have at least one CD4 count measured in the 6 mo following diagnosis.

Statistical Methods

Baseline characteristics of late presenters were compared to non-late presenters and logistic regression was used to identify factors associated with late presentation and late presentation with advanced disease. Factors investigated were age, HIV-exposure group (males having sex with males [MSM], heterosexual male, heterosexual female, male intravenous drug user [IDU], female IDU, other [including patients with unknown HIV exposure group, likely to include a number of IDUs, MSMs, and heterosexuals]), region of origin (Europe, Africa, other [including patients from Central/Southern America and Asia], unknown), European region of HIV diagnosis (based on the cohort location and defined as: South: Greece, Israel, Italy, Portugal, and Spain; Central: Austria, Belgium, France, Germany, Luxemburg, and Switzerland; North: Denmark, Finland, Ireland, Netherlands, Norway, Sweden, and UK; East: Belarus, Bosnia and Herzegovina, Bulgaria, Croatia, Czech Republic, Estonia, Hungary, Latvia, Lithuania, Poland, Romania, Russia, Serbia, Slovakia, Slovenia, and Ukraine), calendar year of diagnosis, and delayed entry into care. *A priori*, we were interested in comparing changes over time within European regions and HIV exposure groups, and performed formal tests of interaction before presenting the stratified analyses. Logistic regression was also used to identify characteristics associated with delayed entry into care among late presenters.

Kaplan Meier survival analysis was used to estimate the probability of the composite endpoint of a new AIDS defining event/deaths and Poisson regression models to evaluate the incidence of AIDS/death. Models were adjusted for the same factors as above, and additionally the effect of time after HIV diagnosis (<1, 1–2, >2 y). Recurrent AIDS events were not collected by all participating cohorts and thus were not included.

Different sensitivity analyses were performed to assess the robustness of our findings. Analyses were repeated excluding persons where date of HIV infection was not available in the dataset and excluding persons with known delayed entry into care. We also assessed how the proportion of late presenters changed by using a different time window around the CD4 count at HIV diagnosis (1 mo, 12 mo) and also assuming those without a CD4 count measured were late presenters or not.

All analyses were performed using Statistical Analysis Software Version 9.3 (Statistical Analysis Software).

Results

Of 107,735 persons in COHERE diagnosed with HIV after 1 January 2000, 84,524 were included in these analyses (78.5%; Table S1). Persons were primarily excluded because they lacked information on CD4 count at HIV diagnosis. Excluded persons were more likely to be from “other” HIV exposure groups (i.e., not categorised as MSM, IDU, or heterosexual), from Eastern Europe, younger, to have no prior AIDS diagnosis at diagnosis, diagnosed in earlier calendar years, and less likely to die. Characteristics of the 84,524 included persons are shown in Table 1; 45,488 persons were classified as late presenters (53.8%) and 28,081 (33.2%) as late presenters with advanced disease. The highest proportion of late presenters was among heterosexual males (66.1%; 11,158/16,875), persons from clinics in Southern Europe (57.0%; 4,447/7,796), and persons originating from Africa (65.1%; 7,708/11,833). 11,903 of the late presenters had AIDS at HIV-1 diagnosis (20.6%), the most common diagnoses were *Pneumocystis jiroveci* pneumonia (20.6%; 2,457/11,903), cytomegalovirus (excluding retinitis, 13.9%; 1,657/11,903), and oesophageal candidiasis (12.3%; 1,463/11,903). Among the 34,561 persons with data on both date of HIV diagnosis and first contact with a clinic, 7.9% (2,720/34,561) had delayed entry into care. Among late presenters, 7.4% had delayed entry into care (1,408/18,933); such individuals were younger (adjusted odds ratio (aOR) 0.87/10 y older; 95% CI 0.83–0.91), presented later (aOR 0.96/year later; 95% CI 0.94–0.97), and were more likely to be under care in Southern Europe compared to Northern Europe (aOR 2.02; 95% CI 1.77–2.30). HIV exposure group or region of origin were not associated with delayed entry into care among late presenters.

Late presentation declined from 57.3% (4,222/7,367) in 2000 to 51.7% (1,665/3,223) in 2010/2011 (Figure 1). The median CD4 count at diagnosis among all persons increased from 306/mm³ in 2000 to 363/mm³ in 2009. Factors associated with late presentation included older age (aOR 1.41/10 y older; 95% CI 1.39–1.43), and region of origin, with persons from Africa (aOR 1.75; 95% CI 1.66–1.84) and persons from other regions (aOR 1.40; 95% CI 1.32–1.48) having higher odds of late presentation compared to persons originating from Europe. Compared to persons from Central Europe, persons under care in Southern Europe (aOR 1.41; 95% CI 1.33–1.48) had higher odds of late presentation, as did all HIV-exposure groups compared to MSM. This ranged from over a doubling in heterosexual men (aOR 2.05; 95% CI 1.97–2.14) to 31% for female IDUs (aOR 1.31; 95% CI 1.18–1.46). Delayed entry into care was associated with decreased odds of late presentation (aOR 0.91; 95% CI 0.84–0.99). After adjustment for these confounders, there was a 4% decrease in the odds of late presentation per later calendar year (aOR 0.96; 95% CI 0.96–0.97). Results were similar for late presentation with advanced disease (Figure 1), with a decrease in advanced disease at presentation of 5% per year after adjustment (aOR 0.95; 95% CI 0.94–0.95). Results were highly consistent excluding patients with unknown or delayed entry into care (Table S2).

Figure 2 shows the crude percentage of late presenters within HIV-exposure groups, region, and calendar period, and the aOR of late presentation per year of later HIV diagnosis (also shown in Table S3). Later calendar year was associated with a decrease in late presentation among MSM, and male and female heterosexuals in both Central and Northern Europe (Figure 2B and 2C). For example, the proportion of MSMs with late presentation in Central Europe declined from 51.9% (1,201/2,312) in 2000/2001 to 40.4% (1,352/3,348) ≥ 2008 (aOR 0.93 per year later; 95% CI 0.92–0.94) and from 48.1% (919/1,911) to 38.6% (1,731/4,484) in Northern Europe (Figure 2C; aOR 0.95 per year later; 95% CI

Table 1. Characteristics at HIV diagnosis of late presenters and late presenters with advanced disease: COHERE 2000–2011.

| Characteristics | Subcharacteristics | All | | Late Presenters | | Late Presents with Advanced Disease | |
|--------------------------------------|---------------------|--------|-------------|-----------------|-----------|-------------------------------------|-----------|
| | | n | Percent | n | Percent | n | Percent |
| All | | 84,524 | 100 | 45,488 | 53.8 | 28,081 | 33.2 |
| HIV exposure group | MSMs | 32,761 | 38.8 | 14,317 | 43.7 | 7,924 | 24.2 |
| | Male heterosexual | 16,875 | 20.0 | 11,158 | 66.1 | 7,723 | 45.8 |
| | Female heterosexual | 20,131 | 23.8 | 11,479 | 57.0 | 6,788 | 33.7 |
| | Male IDU | 4,142 | 4.9 | 2,393 | 57.8 | 1,651 | 39.9 |
| | Female IDU | 1,413 | 1.7 | 718 | 50.8 | 453 | 32.1 |
| | Male other | 6,312 | 7.5 | 3,678 | 58.3 | 2,435 | 38.6 |
| | Female other | 2,890 | 3.4 | 1,745 | 60.4 | 1,107 | 38.3 |
| European region of care | South | 7,796 | 9.2 | 4,447 | 57.0 | 2,873 | 36.9 |
| | Central | 39,949 | 47.3 | 21,729 | 54.4 | 13,192 | 33.0 |
| | North | 35,583 | 42.1 | 18,748 | 52.7 | 11,673 | 32.8 |
| | East | 1,196 | 1.4 | 564 | 47.2 | 343 | 28.7 |
| Region of origin | Europe | 31,370 | 37.1 | 16,163 | 51.5 | 10,394 | 33.1 |
| | Africa | 11,833 | 14.0 | 7,708 | 65.1 | 4,770 | 40.3 |
| | Other | 5,812 | 6.9 | 3,348 | 57.6 | 2,157 | 37.1 |
| | Unknown | 35,509 | 42.0 | 18,269 | 51.5 | 10,760 | 30.3 |
| Delayed entry into care ^a | | 2,720 | 7.9 | 1,408 | 7.4 | 767 | 6.6 |
| | | Median | IQR | Median | IQR | Median | IQR |
| Age | Years | 36 | 30–43 | 38 | 31–45 | 39 | 32–46 |
| CD4 count | /mm ³ | 333 | 160–523 | 175 | 70–270 | 94 | 36–160 |
| Baseline | Month/year | 5/05 | 10/02–11/07 | 2/05 | 8/02–8/07 | 11/04 | 6/02–6/07 |

Late presentation: diagnosed with HIV with a CD4 count below 350/mm³ or an AIDS defining event regardless of the CD4 count, in the 6 mo following HIV diagnosis. Late presentation with advanced disease: diagnosed with HIV with a CD4 count below 200/mm³ or an AIDS defining event, regardless of CD4 cell count, in the 6 mo following HIV diagnosis.

^aDelayed entry into care: ≥ 3 mo between HIV diagnosis and first clinic visit, in those patients where both dates were recorded ($n = 34,561$). Baseline was defined as the earliest of HIV test, first study visit, or cohort enrolment. "Other" regions included Central/Southern America ($n = 4,277$) and Asia ($n = 1,005$). "Other" HIV male and female transmission groups included 5,350 (84.8%) and 2,046 (70.8%) patients with unknown HIV-exposure group, respectively, likely to include a number of IDUs, MSMs, and heterosexuals.

IQR, interquartile range.

doi:10.1371/journal.pmed.1001510.t001

0.94–0.96). Late presentation also decreased over time in heterosexual females from Eastern Europe from 55.6% (25/45) in 2000/2001 to 33.9% (20/59) ≥ 2008 (aOR 0.89 per year later; 95% CI 0.80–0.98). Late presentation increased in male IDUs from Southern Europe (Figure 2A; aOR 1.06 per year later; 95% CI 0.99–1.13), and also among male and female IDUs from Eastern Europe, although the aORs failed to reach statistical significance, possibly owing to the smaller number of patients from Eastern Europe.

Results for presentation with advanced disease are summarised in Table 2. Within Southern Europe, late presentation with advanced disease decreased in MSMs from 36.5% (107/293) during 2000/2001 to 29.7% (364/1,226) ≥ 2008 (aOR 0.94 per year later; 95% CI 0.92–0.97), but was stable in other infection groups. In Central Europe late presentation with advanced disease was decreasing in all HIV-exposure groups except male IDUs, and most rapidly in MSMs, from 33.0% (763/2,312) to 20.7% (693/3,348; aOR 0.91 per year later; 95% CI 0.90–0.92). Similar results were seen in Northern Europe, with a decrease over time in all HIV-exposure groups except male and female IDUs. There were no significant changes over time in Eastern Europe in the odds of late presentation with advanced disease.

There were 8,187 AIDS/deaths (1,852 deaths, 6,283 AIDS, 52 AIDS/death on the same date) during 327,003 person-years of

follow-up. The Kaplan-Meier probability of progression to AIDS/death stratified by late presentation and late presentation with advanced disease is shown in Figures 3A–3D. Late presenters or late presenters with advanced disease within each region had a steep increase in probability of new AIDS/death within the first 1 or 2 y following presentation, but followed a similar curve as those who did present late after this period, with some differences between regions ($p < 0.0001$, test for interaction).

This finding is explored in Table 3. Late presentation was associated with the highest rate of AIDS/death in the first year after HIV diagnosis among persons from Southern Europe (adjusted incidence rate ratio [aIRR] 13.02; 95% CI 8.19–20.70) and the lowest rate in Eastern Europe (aIRR 6.64; 95% CI 3.55–12.43). In the second year after diagnosis, late presentation was associated with a higher rate of AIDS/death among persons from Southern, Central, and Northern Europe, but was similar in both late and non-late presenters from Eastern Europe. Late presentation was not associated with an increased rate of AIDS/death after the initial 2 y, within any European region of care. Also shown are the results for late presentation with advanced disease, which showed very similar findings. Late presentation was associated with an increased rate of AIDS/death in those presenting with advanced disease beyond 2 y in Southern Europe (aIRR 1.38; 95% CI 1.01–1.88), and only in the first year after

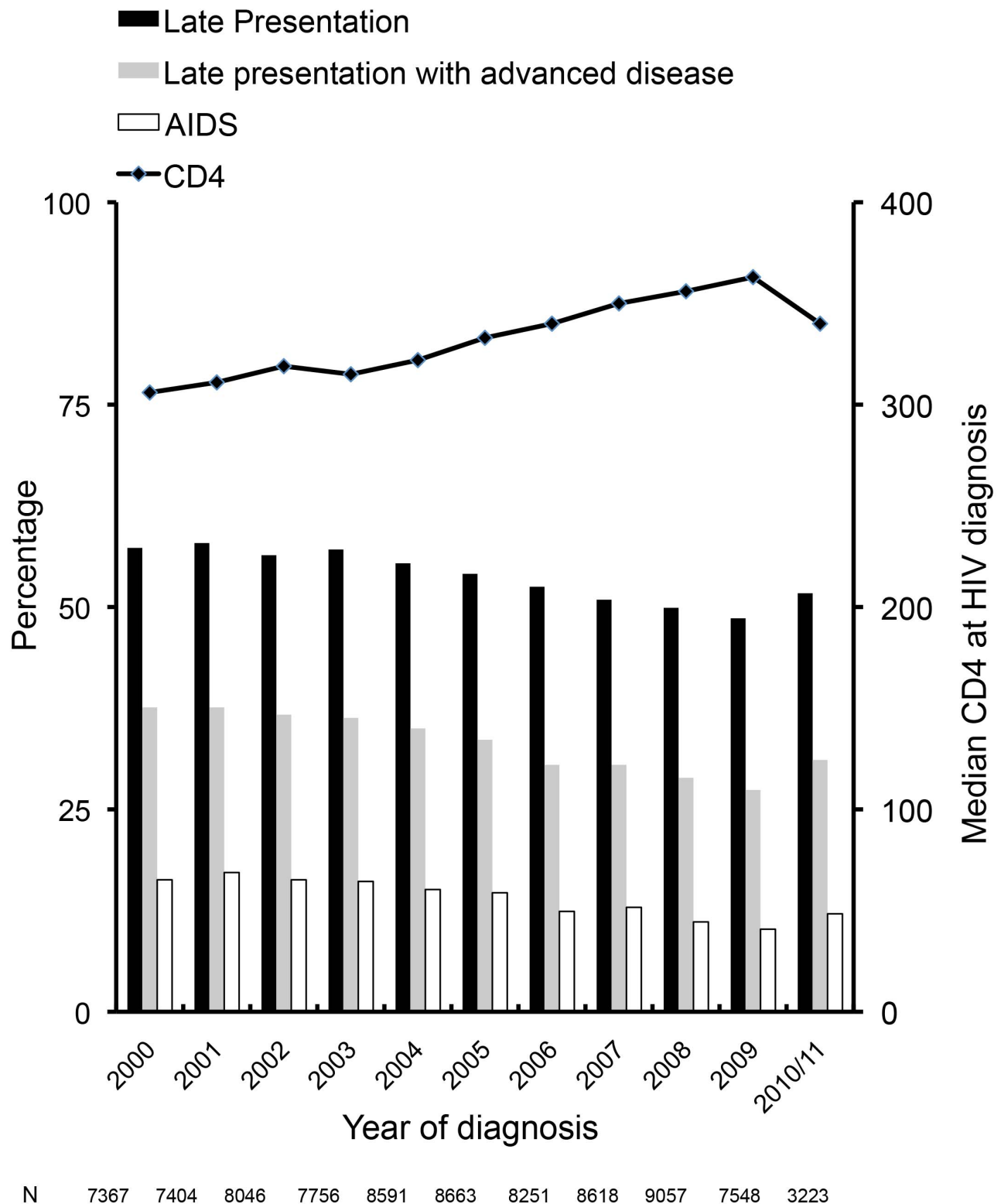


Figure 1. Changes over time in late presentation and CD4 count at HIV diagnosis: COHERE 2000–2011. Late presentation: diagnosed with HIV with a CD4 count below $350/\text{mm}^3$ or an AIDS defining event regardless of the CD4 count, in the 6 mo following HIV diagnosis. Late presentation with advanced disease: diagnosed with HIV with a CD4 count below $200/\text{mm}^3$ or an AIDS defining event, regardless of CD4 cell count, in the 6 mo following HIV diagnosis.
doi:10.1371/journal.pmed.1001510.g001

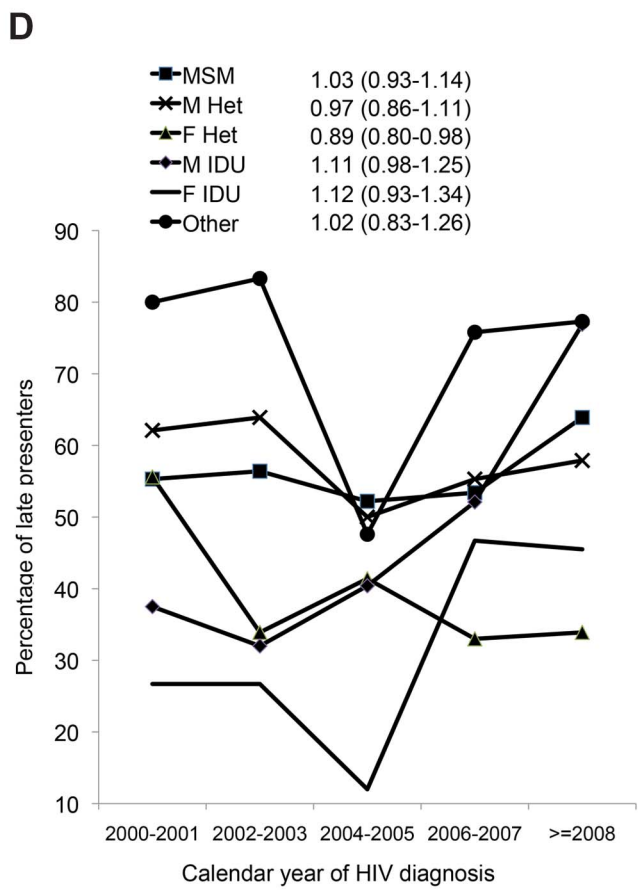
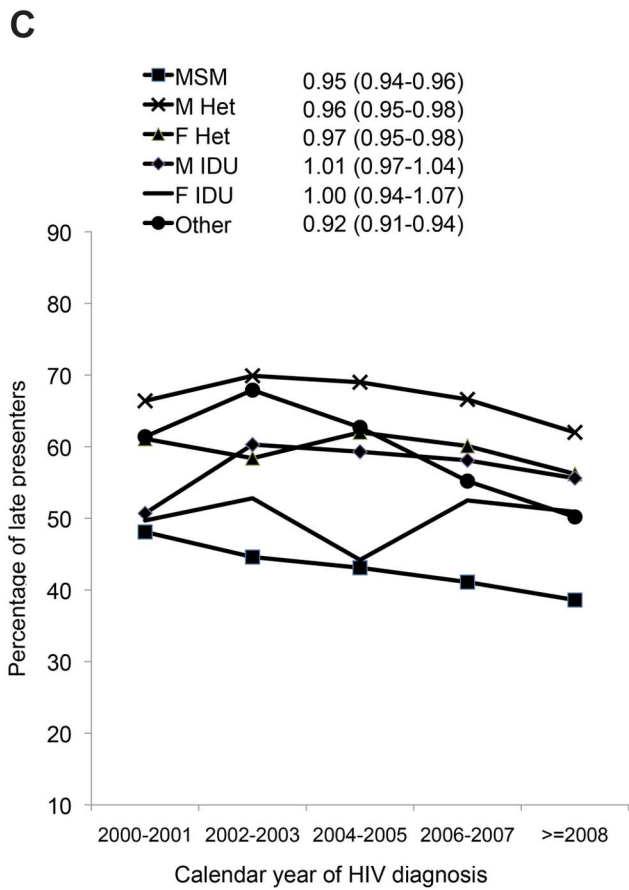
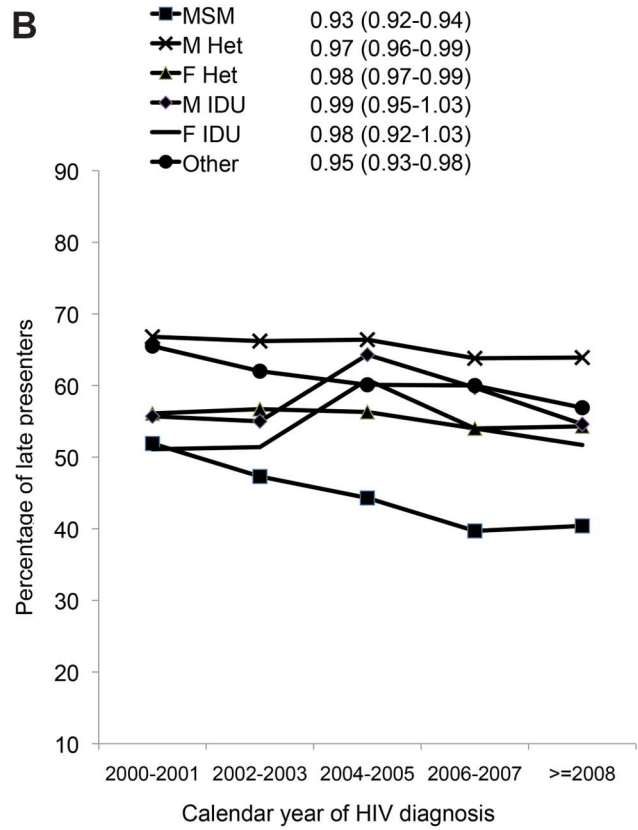
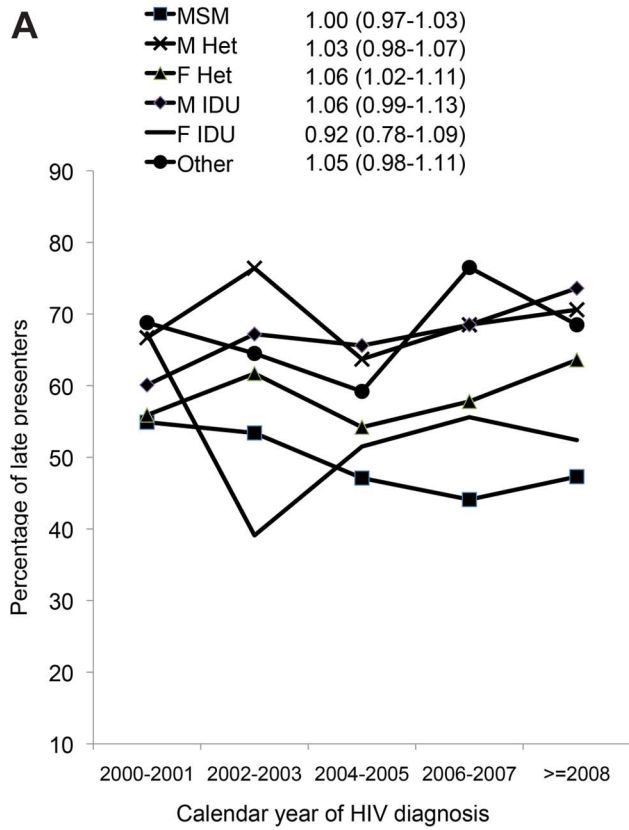


Figure 2. (A–D) Changes in late presentation over calendar time; stratified by HIV exposure group: COHERE 2000–2011. (A) Southern Europe. (B) Central Europe. (C) Northern Europe. (D) Eastern Europe. All models adjusted for age, delayed entry into care (≥ 3 mo) after HIV diagnosis, region of origin, European region of care, and HIV mode of infection. F, female; Het, heterosexual; M, male. doi:10.1371/journal.pmed.1001510.g002

diagnosis for those from Eastern Europe (aIRR 6.98; 95% CI 4.22–11.56). Results were similar when excluding patients with unknown or delayed entry into care (Table S4).

The definition of late presentation or presentation with advanced disease required that a CD4 count was measured within 6 mo of diagnosis. Table S5 considers the odds of having missing CD4 count data, which was consistently higher in Eastern Europe compared to Southern Europe in all HIV-exposure groups. The proportion of late presenters and late presenters with advanced disease varied quite widely, especially in Eastern Europe, as shown in sensitivity analyses in Table 4. Changing the requirement for the CD4 count to be measured within 1 mo or 12 mo of diagnosis did not greatly alter the proportion of late presenters or late presenters with advanced disease, while assuming those without a CD4 count were late presenters increased the proportion of late presenters to 61.9% overall (63,467/102,532) and 73.8% in Eastern Europe (1,781/2,413). Conversely, assuming that those without a CD4 count and without AIDS were not late presenters lowered the proportion of late presenters to 45.1% overall (46,242/102,532) and to 26.0% in Eastern Europe (627/2,413).

Discussion

This study included almost 85,000 persons diagnosed with HIV across Europe after 1 January 2000 and found over half were late presenters and one-third presented with advanced disease using the HIV in Europe definition [2]. The study focused on regional differences within HIV exposure groups, providing important information for health care providers and for future testing initiatives. Overall, late presentation decreased, and especially in MSMs. However, late presentation remains a significant issue across Europe and in all HIV exposure groups. Late presentation increased in male IDUs and female heterosexuals from Southern and IDUs in Eastern Europe. Late presentation was associated with an increased rate of AIDS/deaths, particularly in the first year after HIV diagnosis, although this also varied across Europe. Earlier and more widespread testing, timely referrals after testing positive, as well as improved retention in care strategies are required to further reduce the incidence of late presentation.

The prevalence of late presentation was similar to that reported from other recent European studies [14–17], as is the decrease in late presentation [18,19]. Our study is unique in its ability to report continent-wide changes within HIV exposure groups over a significant period of time. The decreases in late presentation are likely associated with changes to provider initiated HIV testing policies and the massive scale-up of antenatal screening for HIV [20,21]. Factors associated with late presentation in this and previous studies included non-MSMs HIV-exposure group [1,5,14,16,17,22], older age [1,14,16–19,23], and non-European origin [14,17,19,22,24]. Reasons for the increase in late presentation among IDUs in Eastern Europe and heterosexual females and male IDUs from Southern Europe may include suboptimal health care offered to these populations, differences in characteristics that we were unable to adjust for, such as socioeconomic status, the pattern of the underlying epidemic, and appearance of symptoms that may ultimately promote presentation for care [25,26]. Not all persons recommended for testing undergo testing for a variety of reasons, including stigmatisation, discrimination,

criminalisation laws, lack of knowledge, or perceived risk [12]. Not testing inevitably leads to later presentation and initiation of ART, despite the fact that an alarmingly high proportion of the late presenters have been in contact with the health system in the years preceding HIV diagnosis [19,27].

As reported by others, late presentation or presentation with advanced disease was associated with a significantly increased incidence of AIDS/deaths [28,29]. We found an increased incidence of AIDS/death, particularly in the first year after HIV diagnosis [6,18,30]. There was also significant regional variation, with a 13-fold increased rate in persons in care in Southern Europe and a 6-fold increased rate in Eastern Europe. There was a small increased rate of AIDS/death associated with late presentation in the second year after diagnosis, with the exception of Eastern Europe, and no differences after this time. Morbidity and mortality among HIV-positive individuals in Eastern Europe has been reported to be particularly poor in EuroSIDA [31], the only contributor to COHERE with data from Eastern Europe. Unfortunately, COHERE does not have additional data on factors such as whether individuals are current IDUs, on opiate substitution therapy, or alcohol dependant, all of which may contribute to clinical progression after HIV diagnosis and which likely vary significantly across regions.

Collaborations such as the HIV in Europe initiative have helped raise awareness of HIV testing, and developed an indicator disease testing strategy, whereby all persons presenting for care for a number of indicator diseases are routinely tested for HIV [27]. Despite this and other strategies, individuals continue to test late for HIV with consequences in terms of a poor prognosis, an increased risk of onward HIV transmission, increased costs to the health system, and suboptimal benefits of ART [2,32]. Increasing awareness of HIV risk factors, increased opportunities for testing, reducing barriers to testing, and increasing the availability of effective ART will help address ongoing HIV transmission across Europe, and especially in Eastern Europe where the number of newly diagnosed infections continues to be very high [33].

Persons were required to have a CD4 count measured within 6 mo of presentation to be included in analyses. If those with missing CD4 counts were assumed late presenters, the proportion of late presenters rose to 62% overall and 74% in Eastern Europe, with 45% overall and 65% from Eastern Europe having advanced disease. Accurate information on CD4 count at presentation is essential for monitoring late presentation, a recent report suggested 18 of 28 countries routinely monitored CD4 count at presentation, and only 11 had information on at least 50% of persons testing HIV positive [34]. Missing CD4 counts were consistently more likely in persons from Eastern Europe (Table S4) among all HIV exposure categories. Persons from Eastern Europe were exclusively included from the EuroSIDA cohort (details at www.cphiv.dk). Participating sites are typically centres of excellence, likely not representative of all persons in the region [35]. Further, inclusion criteria include a pre-booked clinic outpatient appointment, meaning persons have to survive long enough to be recruited to EuroSIDA, which may have excluded a number of late presenters. Persons from Eastern Europe are known to have a poor prognosis [31], and CD4 count may be more likely to be missing in those who die before a CD4 count is measured [36]. As a result, we are likely underestimating the proportion of and consequences of late presentation in this region.

Table 2. Percentage of late presenters with advanced disease and adjusted odds of late presentation with advanced disease associated with later calendar years of HIV diagnosis: a comparison across regions and HIV exposure group.

| Region of Care | HIV Exposure Group | Per Year Later HIV Diagnosis | | | | | | | | | | | | Multivariate | | |
|----------------|--------------------|------------------------------|---------|-----------|---------|-----------|---------|-----------|---------|-------|---------|------------------|---------|------------------|---------|---------|
| | | 2000–2001 | | 2002–2003 | | 2004–2005 | | 2006–2007 | | ≥2008 | | Univariate | | OR (95% CI) | p-Value | p-Value |
| | | n | Percent | n | Percent | n | Percent | n | Percent | n | Percent | OR (95% CI) | p-Value | | | |
| South | MSM | 293 | 36.5 | 369 | 37.4 | 635 | 28.7 | 919 | 25.8 | 1,226 | 22.9 | 0.92 (0.89–0.94) | <0.0001 | 0.94 (0.92–0.97) | <0.0001 | |
| | M Het | 198 | 51.0 | 203 | 54.7 | 281 | 47.7 | 384 | 48.4 | 361 | 49.6 | 0.98 (0.95–1.02) | 0.41 | 1.00 (0.96–1.04) | 0.82 | |
| | F Het | 222 | 38.3 | 188 | 36.2 | 325 | 35.9 | 313 | 34.8 | 352 | 41.2 | 1.02 (0.98–1.06) | 0.28 | 1.03 (0.99–1.07) | 0.15 | |
| | M IDU | 218 | 42.2 | 122 | 48.4 | 160 | 48.8 | 143 | 46.2 | 106 | 50.0 | 1.03 (0.98–1.09) | 0.20 | 1.00 (0.94–1.07) | 0.92 | |
| | F IDU | 52 | 40.4 | 23 | 13.0 | 33 | 30.3 | 27 | 33.3 | 21 | 38.1 | 1.01 (0.90–1.13) | 0.88 | 0.95 (0.80–1.13) | 0.55 | |
| Central | Other | 112 | 55.4 | 124 | 46.8 | 125 | 37.6 | 115 | 53.9 | 146 | 45.9 | 0.99 (0.94–1.04) | 0.73 | 1.01 (0.95–1.07) | 0.83 | |
| | MSM | 2,312 | 33.0 | 2,460 | 27.8 | 2,912 | 25.1 | 3,070 | 20.1 | 3,348 | 20.7 | 0.92 (0.91–0.93) | <0.0001 | 0.91 (0.90–0.92) | <0.0001 | |
| | M Het | 1,949 | 44.8 | 2,078 | 46.4 | 1,910 | 43.3 | 1,570 | 42.4 | 1,425 | 41.7 | 0.98 (0.96–0.99) | 0.0041 | 0.97 (0.96–0.98) | <0.0001 | |
| | F Het | 2,359 | 31.8 | 2,705 | 33.0 | 2,407 | 32.0 | 1,915 | 28.9 | 1,499 | 29.6 | 0.98 (0.97–1.00) | 0.024 | 0.97 (0.95–0.98) | <0.0001 | |
| | M IDU | 469 | 36.5 | 351 | 36.5 | 339 | 44.5 | 236 | 37.7 | 207 | 39.1 | 1.01 (0.98–1.05) | 0.43 | 0.99 (0.96–1.03) | 0.80 | |
| North | F IDU | 184 | 35.3 | 146 | 30.8 | 120 | 42.5 | 113 | 32.7 | 118 | 28.0 | 0.98 (0.93–1.04) | 0.50 | 0.94 (0.89–0.99) | 0.031 | |
| | Other | 832 | 44.8 | 819 | 40.9 | 828 | 41.3 | 662 | 36.6 | 606 | 37.5 | 0.96 (0.94–0.98) | 0.0003 | 0.95 (0.93–0.98) | <0.0001 | |
| | MSM | 1,911 | 29.3 | 2,244 | 25.2 | 3,042 | 24.6 | 3,289 | 20.6 | 4,484 | 19.1 | 0.94 (0.93–0.95) | <0.0001 | 0.92 (0.90–0.93) | <0.0001 | |
| | M Het | 1,064 | 49.3 | 1,186 | 51.0 | 1,269 | 51.8 | 1,184 | 46.2 | 1,636 | 42.2 | 0.96 (0.95–0.98) | <0.0001 | 0.95 (0.94–0.97) | <0.0001 | |
| | F Het | 1,276 | 39.0 | 1,566 | 37.9 | 1,661 | 37.9 | 1,419 | 36.8 | 1,576 | 33.7 | 0.98 (0.96–0.99) | 0.0051 | 0.96 (0.94–0.97) | <0.0001 | |
| East | M IDU | 460 | 35.4 | 343 | 46.1 | 280 | 44.6 | 234 | 39.3 | 243 | 36.2 | 1.00 (0.97–1.04) | 0.88 | 0.99 (0.95–1.02) | 0.45 | |
| | F IDU | 151 | 31.1 | 106 | 40.6 | 86 | 34.9 | 80 | 31.3 | 57 | 26.3 | 0.99 (0.92–1.05) | 0.65 | 0.98 (0.92–1.05) | 0.53 | |
| | Other | 495 | 44.2 | 542 | 47.1 | 541 | 40.9 | 901 | 36.7 | 2,257 | 29.0 | 0.92 (0.90–0.94) | <0.0001 | 0.92 (0.90–0.94) | <0.0001 | |
| | MSM | 47 | 44.7 | 39 | 43.6 | 67 | 26.9 | 58 | 25.9 | 36 | 36.1 | 0.91 (0.82–1.01) | 0.074 | 0.90 (0.81–1.01) | 0.070 | |
| | M Het | 29 | 44.8 | 36 | 38.9 | 46 | 32.6 | 47 | 36.2 | 19 | 31.6 | 0.92 (0.81–1.05) | 0.21 | 0.93 (0.81–1.06) | 0.27 | |
| F Het | M Het | 45 | 31.1 | 56 | 21.4 | 94 | 24.5 | 94 | 20.2 | 59 | 20.3 | 0.94 (0.85–1.04) | 0.26 | 0.92 (0.82–1.02) | 0.13 | |
| | M IDU | 48 | 31.3 | 75 | 17.3 | 47 | 17.0 | 48 | 33.3 | 13 | 38.5 | 1.07 (0.94–1.27) | 0.30 | 0.97 (0.85–1.12) | 0.68 | |
| | F IDU | 30 | 6.7 | 15 | 13.3 | 25 | 4.0 | 15 | 20.0 | 11 | 27.3 | 1.27 (0.98–1.63) | 0.068 | 1.24 (0.94–1.64) | 0.14 | |
| Other | | 15 | 60.0 | 6 | 83.3 | 21 | 28.6 | 33 | 42.4 | 22 | 54.6 | 0.94 (0.80–1.11) | 0.45 | 0.94 (0.77–1.15) | 0.55 | |

^aAdjusted additionally for age, region of origin, and delayed entry into care (≥3 mo between HIV diagnosis and first clinic visit). Late presentation with advanced disease: diagnosed with HIV with a CD4 count below 200/mm³ or an AIDS defining event, regardless of CD4 cell count, in the 6 mo following HIV diagnosis.
F, female; Het, heterosexual; M, male.
doi:10.1371/journal.pmed.1001510.t002

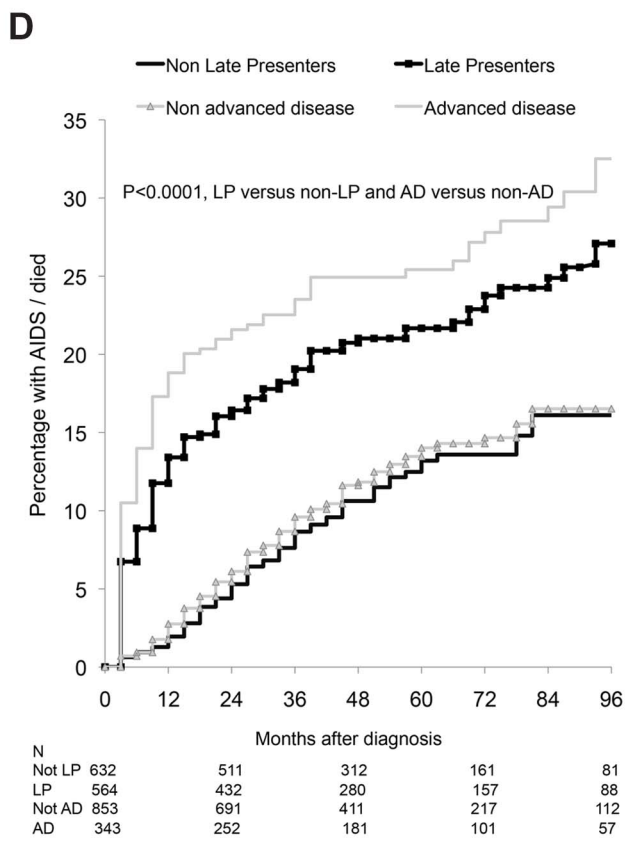
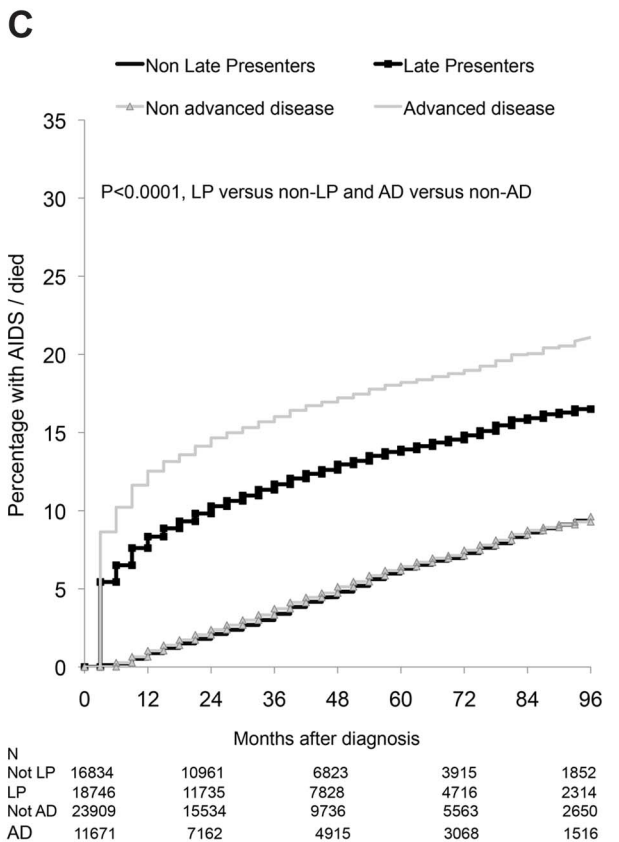
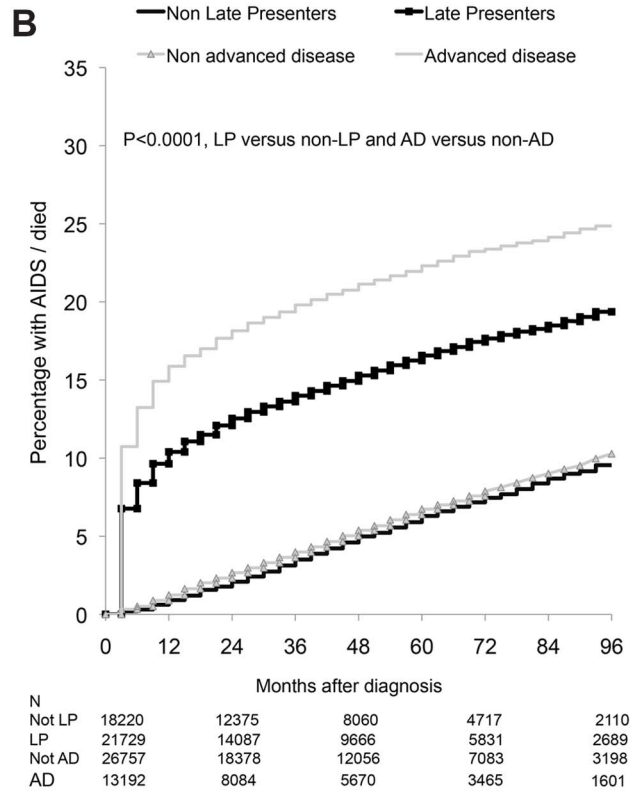
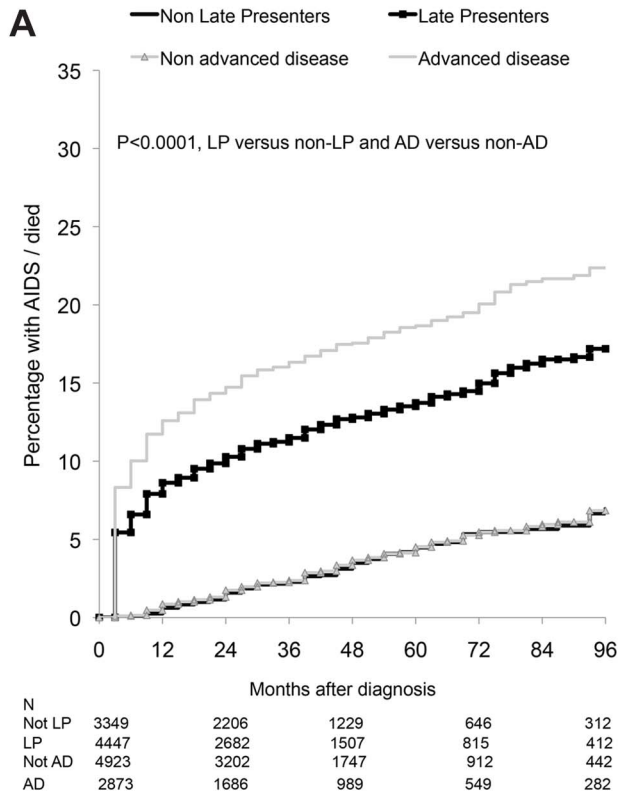


Figure 3. (A–D) Progression to new AIDS/death: role of late presentation or late presentation with advanced disease: COHERE 2000–2011. (A) Southern Europe. (B) Central Europe. (C) Northern Europe. (D) Eastern Europe. LP, diagnosed with HIV with a CD4 count below 350/mm³ or an AIDS defining event regardless of the CD4 count, in the 6 mo following HIV diagnosis. Presentation with advanced disease (AD): diagnosed with HIV with a CD4 count below 200/mm³ or an AIDS defining event regardless of the CD4 count, in the 6 mo following HIV diagnosis. doi:10.1371/journal.pmed.1001510.g003

Some limitations of the study should be noted. Date of HIV infection was assumed to be the date of first clinic visit or enrolment into the participating cohort. We performed sensitivity analyses excluding patients where HIV-test date was not reported to COHERE with highly consistent results (Tables S2 and S3). Late presentation and delayed entry into care can be thought of as two distinct issues with different risk factors, interventions, and outcomes [1,19,37]. Late presentation reflects patients who are unaware of their HIV infection and do not test until their CD4 count has declined, while delayed entry into care reflects persons who are aware of their HIV status but chose not to seek care for their HIV. Less than 10% of our patient population had delayed entry into care, although this information was only available for a

minority of patients. We excluded cohorts including only seroconverters from our analyses, because persons in these cohorts are unlikely to be late presenters. However, inclusion of these cohorts did not substantially alter our findings (Table S2). Local regulations meant information on ethnic origin was not available for over 40% of persons, and likely includes a significant number of migrants who are known to present later for testing [32].

In summary, while late presentation has decreased over time across Europe, it remains a significant issue across the European continent with implications for both individuals and the public health in most European regions. Late presentation was associated with an increased rate of AIDS/death, particularly in the first year after HIV diagnosis. It is important that earlier HIV testing

Table 3. Number and percentage of AIDS/deaths and adjusted incidence rate ratios of AIDS/death after HIV diagnosis in COHERE 2000–2011; late presenters versus non late presenters stratified by European region of care and time since presentation.

| European Region of Care | Years since Diagnosis | n (%) AIDS/ Deaths ^a | Univariate | | Multivariate | |
|---|-----------------------|------------------------------------|---------------------|---------|---------------------|---------|
| | | | IRR (95% CI) | p-Value | aIRR (95% CI) | p-Value |
| Late presenters versus non late presenters | | | | | | |
| South | <1 | 376 (95.2) | 15.83 (9.97–25.10) | <0.0001 | 13.02 (8.19–20.70) | <0.0001 |
| Central | <1 | 2,228 (93.5) | 12.87 (10.94–15.14) | <0.0001 | 11.24 (9.54–13.25) | <0.0001 |
| North | <1 | 1,528 (91.9) | 10.70 (8.96–12.75) | <0.0001 | 9.30 (7.79–11.11) | <0.0001 |
| East | <1 | 75 (86.2) | 7.55 (4.10–13.88) | <0.0001 | 6.64 (3.55–12.43) | <0.0001 |
| South | 1–2 | 56 (70.0) | 1.93 (1.20–3.11) | 0.0070 | 1.55 (0.94–2.53) | 0.081 |
| Central | 1–2 | 374 (69.5) | 2.03 (1.69–2.43) | <0.0001 | 1.78 (1.48–2.15) | <0.0001 |
| North | 1–2 | 280 (64.7) | 1.72 (1.42–2.10) | <0.0001 | 1.57 (1.29–1.93) | <0.0001 |
| East | 1–2 | 16 (45.7) | 1.02 (0.53–1.99) | 0.95 | 0.94 (0.47–1.91) | 0.87 |
| South | >2 | 112 (64.4) | 1.47 (1.08–2.01) | 0.015 | 1.21 (0.88–1.67) | 0.24 |
| Central | >2 | 726 (55.7) | 1.04 (0.94–1.16) | 0.45 | 0.95 (0.85–1.06) | 0.35 |
| North | >2 | 535 (52.5) | 0.96 (0.84–1.08) | 0.47 | 0.88 (0.78–1.00) | 0.049 |
| East | >2 | 35 (45.5) | 0.90 (0.57–1.41) | 0.64 | 0.80 (0.50–1.29) | 0.36 |
| Advanced disease versus non-advanced disease | | | | | | |
| South | <1 | 356 (90.1) | 17.13 (12.31–23.85) | <0.0001 | 14.63 (10.46–20.47) | <0.0001 |
| Central | <1 | 2,069 (86.8) | 14.96 (13.28–16.84) | <0.0001 | 13.27 (11.77–14.98) | <0.0001 |
| North | <1 | 1,437 (86.4) | 14.14 (12.29–16.27) | <0.0001 | 12.45 (10.80–14.37) | <0.0001 |
| East | <1 | 64 (73.6) | 7.85 (4.88–12.65) | <0.0001 | 6.98 (4.22–11.56) | <0.0001 |
| South | 1–2 | 48 (60.0) | 2.89 (1.85–4.52) | <0.0001 | 2.31 (1.46–3.68) | 0.0004 |
| Central | 1–2 | 243 (45.2) | 1.88 (1.59–2.23) | <0.0001 | 1.62 (1.36–1.93) | <0.0001 |
| North | 1–2 | 194 (44.8) | 1.80 (1.49–2.17) | <0.0001 | 1.61 (1.32–1.96) | <0.0001 |
| East | 1–2 | 9 (25.7) | 0.99 (0.46–2.11) | 0.97 | 0.87 (0.39–1.94) | 0.73 |
| South | >2 | 86 (49.7) | 1.72 (1.28–2.32) | 0.0004 | 1.38 (1.01–1.88) | 0.041 |
| Central | >2 | 463 (35.5) | 1.17 (1.05–1.31) | 0.0061 | 1.06 (0.94–1.19) | 0.32 |
| North | >2 | 351 (34.4) | 1.02 (0.90–1.17) | 0.72 | 0.94 (0.82–1.07) | 0.33 |
| East | >2 | 21 (27.3) | 0.86 (0.52–1.41) | 0.54 | 0.75 (0.44–1.29) | 0.30 |

Adjusted additionally for age, region of origin, delayed entry into care (≥ 3 mo between HIV diagnosis and first clinic visit), and HIV-exposure group. Late presentation: presenting for care with a CD4 count below 350/mm³ or presenting with an AIDS defining event regardless of the CD4 count, in the 6 mo following presentation. Advanced disease: presenting for care with a CD4 count below 200/mm³ or presenting with an AIDS defining event, regardless of CD4 cell count, in the 6 mo following presentation.

^aFigures are n (%) of clinical events (AIDS/deaths) in late presenters or late presenters with advanced disease.

doi:10.1371/journal.pmed.1001510.t003

Table 4. Sensitivity analyses showing the proportion of late presenters or late presenters with advanced disease using different inclusion criteria for CD4 count at HIV diagnosis: COHERE 2000–2011.

| Characteristic | Region | <i>n</i> Late Presenters and Presenters with Advanced Disease | CD4 Measured within <i>x</i> Months of HIV Diagnosis | | First CD4, Irrespective of Date | No CD4 in First 6 mo = LP/AD | No CD4 in First 6 mo Not LP/AD |
|-------------------------|---------|---|--|---------------------------|---------------------------------|------------------------------|--------------------------------|
| | | | <i>x</i> = 1 | <i>x</i> = 6 ^a | | | |
| <i>x</i> = 12 | | | | | | | |
| All patients | | Total <i>n</i> | 67,338 | 84,524 | 98,743 | 102,532 | 102,532 |
| | | LP (%) | 54.7 | 53.8 | 52.6 | 61.9 | 45.1 |
| | | AD (%) | 34.5 | 33.2 | 31.4 | 45.0 | 28.1 |
| European region of care | South | Total <i>n</i> | 5,491 | 7,796 | 8,788 | 8,937 | 8,937 |
| | | LP (%) | 58.2 | 57.0 | 56.9 | 62.5 | 50.5 |
| | | AD (%) | 38.9 | 36.9 | 36.0 | 44.9 | 32.9 |
| | Central | Total <i>n</i> | 28,491 | 39,949 | 50,096 | 50,729 | 50,729 |
| | | LP (%) | 56.1 | 54.4 | 52.5 | 64.1 | 43.5 |
| | | AD (%) | 35.3 | 33.0 | 30.3 | 47.3 | 26.7 |
| | North | Total <i>n</i> | 17,300 | 35,583 | 37,488 | 40,453 | 40,453 |
| | | LP (%) | 53.0 | 52.7 | 52.2 | 68.4 | 47.0 |
| | | AD (%) | 33.0 | 32.8 | 32.2 | 40.9 | 29.5 |
| | East | Total <i>n</i> | 724 | 1,196 | 2,371 | 2,413 | 2,413 |
| | | LP (%) | 48.2 | 47.2 | 45.3 | 73.8 | 26.0 |
| | | AD (%) | 30.8 | 28.7 | 23.7 | 64.7 | 16.9 |

Late presentation: diagnosed with HIV with a CD4 count below 350/mm³ or an AIDS defining event regardless of the CD4 count, in the 6 mo following HIV diagnosis. Late presentation with advanced disease: diagnosed with HIV with a CD4 count below 200/mm³ or an AIDS defining event, regardless of CD4 cell count, in the 6 mo following HIV diagnosis.

^aCorresponds to main analyses presented in Results.

AD, advanced disease; LP, late presenter.

doi:10.1371/journal.pmed.1001510.t004

strategies are targeted to all populations at risk both within the health care system and in community based programs, to ensure timely referrals after testing positive, improved retention in care strategies, and optimal clinical management and initiation of ART in those testing HIV positive.

Supporting Information

Table S1 Summary of patients included and excluded from the COHERE analysis of late presentation across Europe: COHERE 2000–2011. *Persons were also excluded if gender or HIV diagnosis was missing, if aged <16, or if there was evidence of an earlier HIV diagnosis (CD4 count, AIDS diagnosis, or starting ART) more than 1 mo prior to the date of first clinic visit. †Additionally excluded patients from Argentinean centres. (DOCX)

Table S2 Adjusted odds of late presentation among persons with known first clinic visit and without delayed entry into care and including seroconverter cohorts contributing to COHERE: COHERE 2000–2011. (DOCX)

Table S3 Percentage of late presenters and adjusted odds* of late presentation associated with later calendar years of HIV diagnosis: a comparison across regions and HIV exposure group. *Adjusted additionally for age, region of origin, and delayed entry into care (≥ 3 mo between HIV diagnosis and first clinic visit). Late presentation: diagnosed with HIV with a CD4 count below $350/\text{mm}^3$ or an AIDS defining event, regardless of CD4 cell count, in the 6 mo following HIV diagnosis. F, female; Het, heterosexual; M, male. (DOCX)

Table S4 Number and percentage of AIDS/deaths and adjusted* incidence rate ratios of AIDS/death after HIV diagnosis in COHERE 2000–2011: late presenters versus non late presenters and late presentation with advanced disease versus non-advanced disease stratified by European region of care and time since presentation; excluding persons with delayed entry into care or unknown first visit date ($n=31,733$). Late presentation: presenting for care with a CD4 count below $350/\text{mm}^3$ or presenting with an AIDS defining event regardless of the CD4 count, in the 6 mo following presentation. Advanced disease: presenting for care with a CD4 count below $200/\text{mm}^3$ or presenting with an AIDS defining event, regardless of CD4 cell count, in the 6 mo following presentation. ^Figures are n (%) of clinical events (AIDS/deaths) in late presenters or late presenters with advanced disease. *Adjusted additionally for age, region of origin, and delayed entry into care (≥ 3 mo between HIV diagnosis and first clinic visit). + Persons from Northern Europe were also excluded as the majority of persons from Northern Europe had delayed entry into care or unknown first visit date. (DOCX)

Table S5 Odds of missing CD4 count in the 6 mo following HIV diagnosis stratified by HIV exposure group: COHERE 2000–2011. Male and females belonging to the “Other” HIV exposure group were combined into a single category. (DOCX)

Acknowledgments

The EuroCoord acknowledgment appendix may be found at http://www.cphiv.dk/portals/0/files/EuroCoord_appendix_December2012.pdf

The Collaboration of Observational HIV Epidemiological Research Europe (COHERE) group

Analysis and Writing Committee. Amanda Mocroft, Jens Lundgren, Miriam Sabin, Antonella d’Arminio Monforte, Norbert Brockmeyer, Jordi Casabona, Antonella Castagna, Dominique Costagliola, Francois Dabis, Stéphane De Wit, Gerd Fätkenheuer, Hansjakob Furrer, Anne Johnson, Mario Lazanas, Catherine Lepout, Santiago Moreno, Niels Obel, Frank Post, Joanne Reekie, Peter Reiss, Caroline Sabin, Adriane Skaletz-Rorowski, Ignacio Suarez-Loano, Carlo Torti, Josiane Warszawski, Robert Zangerle, Céline Fabre-Colin, Jesper Kjaer, Genevieve Chene, Jesper Grarup, Ole Kirk

Late Presenters Project Team. Antonella d’Arminio Monforte, Norbert Brockmeyer, Jordi Casabona, Antonella Castagna, Dominique Costagliola, Francois Dabis, Stéphane De Wit, Gerd Fätkenheuer, Hansjakob Furrer, Anne Johnson, Ole Kirk, Mario Lazanas, Catherine Lepout, Jens Lundgren, Amanda Mocroft, Santiago Moreno, Niels Obel, Frank Post, Joanne Reekie, Peter Reiss, Caroline Sabin, Miriam Sabin, Adriane Skaletz-Rorowski, Ignacio Suarez-Loano, Carlo Torti, Josiane Warszawski, Robert Zangerle

COHERE Steering Committee. Steering Committee - Contributing cohorts: Robert Zangerle (AHIVCOS), Giota Touloumi (AMACS), Josiane Warszawski (ANRS CO1 EPF), Laurence Meyer (ANRS CO2 SEROCO), Francois Dabis (ANRS CO3 AQUITAINE), Murielle Mary Krause (ANRS CO4 FHDH), Jade Ghosn (ANRS CO6 PRIMO), Catherine Lepout (ANRS CO8 COPILOTE), Frank de Wolf (ATHENA), Peter Reiss (ATHENA), Maria Prins (CASCADE), Heiner Bucher (CASCADE), Caroline Sabin (CHIC), Diana Gibb (CHIPS), Gerd Fätkenheuer (Cologne Bonn), Osamah Hamouda (German ClinSurv), Barbara Bartmeyer (German ClinSurv), Julia Del Amo (Co-RIS), Niels Obel (Danish HIV Cohort), Claire Thorne (ECS), Amanda Mocroft (EuroSIDA), Ole Kirk (EuroSIDA), Christoph Stephan (Frankfurt), Santiago Pérez-Hoyos (GEMES-Haemo), Antoni Noguera-Julian (NEXXP and CORISPE-cat), Andrea Antinori (ICC), Antonella d’Arminio Monforte (ICONA), Norbert Brockmeyer (KOMPNET), José Ramos (Madrid Cohort), Manuel Bategay (SHCS, MoCHIV), Andri Rauch (SHCS), Cristina Mussini (Modena Cohort), Pat Tookey (NSHPC), Jordi Casabona (PISCIS), Jose M. Miró (PISCIS), Antonella Castagna (San Raffaele), Stéphane de Wit (St. Pierre Cohort), Tessa Goetghebuer (Belgian Pediatric cohort, St Pierre), Carlo Torti (Italian Master Cohort), Ramon Teira (VACH), Myriam Garrido (VACH) **Paediatric cohort representatives:** Ali Judd, Josiane Warszawski **European AIDS Treatment Group:** David Haerry

Executive committee. Ian Weller (Chair, University College London), Jordi Casabona (PISCIS), Dominique Costagliola (FHDH), Antonella d’Arminio-Monforte (ICONA), Manuel Bategay (MoCHIV), Maria Prins (CASCADE), Frank de Wolf (ATHENA), Jesper Grarup (Head, Copenhagen Regional Coordinating Centre), Genevieve Chene (Head, Bordeaux Regional Coordinating Centre)

Regional co-ordinating centres. Bordeaux RCC cohorts: Céline Fabre-Colin, Christine Schwimmer, Monique Termote, Guillaume Touzeau; Copenhagen RCC cohorts: Maria Campbell, Jesper Kjaer, Nina Friis-Møller

Project leaders and statistical analysis. Julia Bohlius, Vincent Bouteloup, Heiner Bucher, Alessandro Cozzi-Lepri, Francois Dabis, Antonella d’Arminio Monforte, Frank de Wolf, Maria Dorrucchi, Matthias Egger, Frederik Engsig, Hansjakob Furrer, Ole Kirk, Olivier Lambotte, Charlotte Lewden, Rebecca Lodwick, Sophie Matheron, Laurence Meyer, Jose Miro, Amanda Mocroft, Niels Obel, Roger Paredes, Andrew Phillips, Massimo Puoti, Joanne Reekie, Caroline Sabin, Alexandra Scherrer, Colette Smit, Jonathan Sterne, Rodolphe Thiebaut, Claire Thorne, Carlo Torti, Viktor von Wyl, Linda Wittkop

This paper was presented in part at XIX International AIDS Society Conference, 22–27 July 2012, Washington (D.C.) (abstract number THAB0303).

Author Contributions

Conceived and designed the experiments: AM JL MS Ad’A NB JC AC DC FD SDW GF HF AJ ML CL SM NO FP JR PR CS ASR ISL CT JW RZ CFC JK GC JG OK. Analyzed the data: AM JR. Wrote the first draft of the manuscript: AM. Contributed to the writing of the manuscript: AM JL MS Ad’A NB JC AC DC FD SDW GF HF AJ ML CL SM NO FP JR PR CS ASR ISL CT JW RZ CFC JK GC JG OK. ICMJE criteria for

authorship read and met: AM, JL, MS, Ad'A, NB, JC, AC, DC, FD, SDW, GF, HF, AJ, ML, CL, SM, NO, FP, JR, PR, CS, ASR, ISL, CT, JW, RZ, CFC, JK, GC, JG, OK. Agree with manuscript results and conclusions: AM, JL, MS, Ad'A, NB, JC, AC, DC, FD, SDW, GF, HF, AJ, ML, CL, SM, NO, FP, JR, PR, CS, ASR.

ISL, CT, JW, RZ, CFC, JK, GC, JG, OK. Enrolled patients: AM, JL, MS, Ad'A, NB, JC, AC, DC, FD, SDW, GF, HF, AJ, ML, CL, SM, NO, FP, JR, PR, CS, ASR, ISL, CT, JW, RZ, CFC, JK, GC, JG, OK.

References

- Girardi E, Aloisi MS, Arici C, Pezzotti P, Serraino D, et al. (2004) Delayed presentation and late testing for HIV: demographic and behavioral risk factors in a multicenter study in Italy. *J Acquir Immune Defic Syndr* 36: 951–959.
- Antinori A, Coenen T, Costagliola D, Dedes N, Ellefson M, et al. (2011) Late presentation of HIV infection: a consensus definition. *HIV Med* 12: 61–64.
- World Health Organization (2010) Antiretroviral therapy for HIV infection in adults and adolescents: recommendations for a public health approach—2010 revision. Available: http://whqlibdoc.who.int/publications/2010/9789241599764_eng.pdf. Accessed 23 July 2013.
- Battegay M, Fluckiger U, Hirschel B, Furrer H (2007) Late presentation of HIV-infected individuals. *Antivir Ther* 12: 841–851.
- Sabin CA, Smith CJ, Gumley H, Murphy G, Lampe FC, et al. (2004) Late presenters in the era of highly active antiretroviral therapy: uptake of and responses to antiretroviral therapy. *AIDS* 18: 2145–2151.
- Lanoy E, Mary-Krause M, Tattevin P, Perbost I, Poizot-Martin I, et al. (2007) Frequency, determinants and consequences of delayed access to care for HIV infection in France. *Antivir Ther* 12: 89–96.
- Quinn TC, Wawer MJ, Sewankambo N, Serwadda D, Li C, et al. (2000) Viral load and heterosexual transmission of human immunodeficiency virus type 1. Rakai Project Study Group. *N Engl J Med* 342: 921–929.
- European Centre for Disease Prevention and Control. (2010) HIV testing: increasing uptake and effectiveness in the European Union. Available: http://www.ecdc.europa.eu/en/publications/Publications/101129_GUI_HIV_testing.pdf. Accessed 23 July 2013.
- Krentz HB, Gill J (2010) Despite CD4 cell count rebound the higher initial costs of medical care for HIV-infected patients persist 5 years after presentation with CD4 cell counts less than 350 μ l. *AIDS* 24: 2750–2753.
- Fleishman JA, Yehia BR, Moore RD, Gebo KA (2010) The economic burden of late entry into medical care for patients with HIV infection. *Med Care* 48: 1071–1079.
- Deblonde J, De KP, Hamers FF, Fontaine J, Luchters S, et al. (2010) Barriers to HIV testing in Europe: a systematic review. *Eur J Public Health* 20: 422–432.
- Yazdanpanah Y, Lange J, Gerstoft J, Cairns G (2010) Earlier testing for HIV—how do we prevent late presentation? *Antivir Ther* 15 Suppl 1: 17–24.
- Kjaer J, Ledergerber B (2004) HIV cohort collaborations: proposal for harmonization of data exchange. *Antivir Ther* 9: 631–633.
- Zoufaly A, van der HM, Marcus U, Hoffmann C, Stellbrink H, et al. (2012) Late presentation for HIV diagnosis and care in Germany. *HIV Med* 13: 172–181.
- d'Arminio MA, Cozzi-Lepri A, Girardi E, Castagna A, Mussini C, et al. (2011) Late presenters in new HIV diagnoses from an Italian cohort of HIV-infected patients: prevalence and clinical outcome. *Antivir Ther* 16: 1103–1112.
- Camoni L, Raimondo M, Regine V, Salfa MC, Suligoi B (2013) Late presenters among persons with a new HIV diagnosis in Italy, 2010–2011. *BMC Public Health* 13: 281.
- Vives N, Carnicer-Pont D, Garcia de OP, Camps N, Esteve A, et al. (2012) Factors associated with late presentation of HIV infection in Catalonia, Spain. *Int J STD AIDS* 23: 475–480.
- Helleberg M, Engsig FN, Kronborg G, Laursen AL, Pedersen G, et al. (2012) Late presenters, repeated testing, and missed opportunities in a Danish nationwide HIV cohort. *Scand J Infect Dis* 44: 282–288.
- Ndiaye B, Salleron J, Vincent A, Bataille P, Bonnevie F, et al. (2011) Factors associated with presentation to care with advanced HIV disease in Brussels and Northern France: 1997–2007. *BMC Infect Dis* 11: 11.
- European Centre for Disease Prevention and Control/WHO Regional Office for Europe (2009) HIV/AIDS surveillance in Europe 2009. Available: http://www.ecdc.europa.eu/en/publications/publications/101129_sur_hiv_2009.pdf. Accessed 23 July 2013.
- World Health Organization (2007) Guidance on provider-initiated HIV testing and counselling in health facilities. Available: http://whqlibdoc.who.int/publications/2007/9789241595568_eng.pdf. Accessed 23 July 2013.
- de Olalla PG, Manzano C, Sambat MA, Ocana I, Knobel H, et al. (2011) Epidemiological characteristics and predictors of late presentation of HIV infection in Barcelona (Spain) during the period 2001–2009. *AIDS Res Ther* 8: 22.
- Castilla J, Sobrino P, De La Fuente L, Noguer J, Guerra L, et al. (2002) Late diagnosis of HIV infection in the era of highly active antiretroviral therapy: consequences for AIDS incidence. *AIDS* 16: 1945–1951.
- Couturier E, Schwoebel V, Michon C, Hubert JB, Delmas MC, et al. (1998) Determinants of delayed diagnosis of HIV infection in France, 1993–1995. *AIDS* 12: 795–800.
- Mathers BM, Degenhardt L, Ali H, Wiessing L, Hickman M, et al. (2010) HIV prevention, treatment, and care services for people who inject drugs: a systematic review of global, regional, and national coverage. *Lancet* 375: 1014–1028.
- Dickson N, McAllister S, Sharples K, Paul C (2012) Late presentation of HIV infection among adults in New Zealand: 2005–2010. *HIV Med* 13: 182–189.
- Sullivan AK, Raben D, Reekie J, Rayment M, Mocroft A, et al. (2013) Feasibility and effectiveness of indicator condition-guided testing for HIV: results from HIDES 1 (HIV Indicator Diseases across Europe Study). *PLoS One* 8: e52845. doi:10.1371/journal.pone.0052845
- Chadborn TR, Delpech VC, Sabin CA, Sinka K, Evans BG (2006) The late diagnosis and consequent short-term mortality of HIV-infected heterosexuals (England and Wales, 2000–2004). *AIDS* 20: 2371–2379.
- Samet JH, Freedberg KA, Stein MD, Lewis R, Savetsky J, et al. (1998) Trillion virion delay: time from testing positive for HIV to presentation for primary care. *Arch Intern Med* 158: 734–740.
- Delpierre C, Lauwers-Cances V, Pugliese P, Poizot-Martin I, Billaud E, et al. (2008) Characteristics trends, mortality and morbidity in persons newly diagnosed HIV positive during the last decade: the profile of new HIV diagnosed people. *Eur J Public Health* 18: 345–347.
- Reekie J, Kowalska JD, Karpov I, Rockstroh J, Karlsson A, et al. (2012) Regional differences in AIDS and non-AIDS related mortality in HIV-positive individuals across Europe and Argentina: the EuroSIDA study. *PLoS One* 7: e41673. doi:10.1371/journal.pone.0041673.
- Girardi E, Sabin CA, Monforte AD (2007) Late diagnosis of HIV infection: epidemiological features, consequences and strategies to encourage earlier testing. *J Acquir Immune Defic Syndr* 46 Suppl 1: S3–S8.
- Jolley E, Rhodes T, Platt L, Hope V, Latypov A, et al. (2012) HIV among people who inject drugs in Central and Eastern Europe and Central Asia: a systematic review with implications for policy. *BMJ Open* 2.
- LikataVICIUS G, van de Laar MJ (2011) HIV infection and AIDS in the European Union and European Economic Area, 2010. *Euro Surveill* 16. Available: <http://www.eurosurveillance.org/images/dynamic/EE/V16N48/art20030.pdf>. Accessed 23 July 2013.
- Global report: UNAIDS report on the global AIDS epidemic (2012). Available: http://www.unaids.org/en/media/unaids/contentassets/documents/epidemiology/2012/gr2012/20121120_UNAIDS_Global_Report_2012_en.pdf. Accessed 23 July 2013.
- Johnson M, Sabin C, Girardi E (2010) Definition and epidemiology of late presentation in Europe. *Antivir Ther* 15 Suppl 1: 3–8.
- Turner BJ, Cunningham WE, Duan N, Andersen RM, Shapiro MF, et al. (2000) Delayed medical care after diagnosis in a US national probability sample of persons infected with human immunodeficiency virus. *Arch Intern Med* 160: 2614–2622.

Editors' Summary

Background. Every year about 2.5 million people become newly infected with HIV, the virus that causes AIDS. HIV can be transmitted through unprotected sex with an infected partner, from an HIV-positive mother to her unborn baby, or through injection of drugs. Most people do not become ill immediately after infection with HIV although some develop a short influenza-like illness. The next stage of the HIV infection, which may last up to 10 years, also has no major symptoms but, during this stage, HIV slowly destroys immune system cells, including CD4 cells, a type of lymphocyte. Eventually, when the immune system is unable to fight off infections by other disease-causing organisms, HIV-positive people develop AIDS-defining conditions—unusual viral, bacterial, and fungal infections and unusual tumors. Progression to AIDS occurs when any severe AIDS-defining condition is diagnosed, when the CD4 count in the blood falls below 200 cells/mm³, or when CD4 cells account for fewer than 15% of lymphocytes.

Why Was This Study Done? People need to know they are HIV positive as soon as possible after they become infected because antiretroviral therapy, which controls but does not cure HIV infection, works best if it is initiated when people still have a relatively high CD4 count. Early diagnosis also reduces the risk of onward HIV transmission. However, 40%–60% of HIV-positive individuals in developed countries are not diagnosed until they have a low CD4 count or an AIDS-defining illness. Reasons for such late presentation include fear of discrimination or stigmatization, limited knowledge about HIV risk factors, testing, and treatment together with missed opportunities to offer an HIV test. Policy makers involved in national and international HIV control programs need detailed information about patterns of late presentation before they can make informed decisions about how to reduce this problem. In this study, therefore, the researchers use data collected by the Collaboration of Observational HIV Epidemiological Research in Europe (COHERE) to analyze trends in late presentation over time across Europe and in different groups of people at risk of HIV infection and to investigate the clinical consequences of late presentation.

What Did the Researchers Do and Find? The researchers analyzed data collected from 84,524 individuals participating in more than 20 observational studies that were undertaken in 35 European countries and that investigated outcomes among HIV-positive people. Nearly 54% of the participants were late presenters—individuals who had a CD4 count of less than 350 cells/mm³ or an AIDS-defining illness within 6 months of HIV diagnosis. Late presentation was highest among heterosexual males, in Southern European countries, and among people originating in Africa. Overall, late presentation decreased from 57.3% in 2000 to 51.7% in 2010/11. However, whereas late presentation decreased over time among men having sex with men in Central and Northern Europe, for example, it increased over time among female heterosexuals in Southern Europe. Finally, among the

8,000 individuals who developed a new AIDS-defining illness or died during follow-up, compared to non-late presentation, late presentation was associated with an increased incidence of AIDS/death in all regions of Europe during the first and second year after HIV diagnosis (but not in later years); the largest increase in incidence (13-fold) occurred during the first year after diagnosis in Southern Europe.

What Do These Findings Mean? These findings indicate that, although late presentation with HIV infection has decreased in recent years, it remains an important issue across Europe and in all groups of people at risk of HIV infection. They also show that individuals presenting late have a worse clinical outlook, particularly in the first and second year after diagnosis compared to non-late presenters. Several aspects of the study design may affect the accuracy and usefulness of these findings, however. For example, some of the study participants recorded as late presenters may have been people who were aware of their HIV status but who chose not to seek care for HIV infection, or may have been seen in the health care system prior to HIV diagnosis without being offered an HIV test. Delayed entry into care and late presentation are likely to have different risk factors, a possibility that needs to be studied further. Despite this and other study limitations, these findings nevertheless suggest that HIV testing strategies that encourage early testing in all populations at risk, that ensure timely referrals, and that improve retention in care are required to further reduce the incidence of late presentation with HIV infection in Europe.

Additional Information. Please access these websites via the online version of this summary at <http://dx.doi.org/10.1371/journal.pmed.1001510>.

- Information is available from the US National Institute of Allergy and infectious diseases on HIV infection and AIDS
- NAM/aidsmap provides basic information about HIV/AIDS, and summaries of recent research findings on HIV care and treatment
- Information is available from Avert, an international AIDS charity, on many aspects of HIV/AIDS, including detailed information on the stages of HIV infection and on HIV and AIDS in Europe (in English and Spanish)
- The HIV in Europe Initiative has information about strategies to improve earlier diagnosis and access to care in Europe
- Information about COHERE, which was established in 2005 to conduct epidemiological research on the prognosis and outcome of HIV-infected people from across Europe, is available; more information on the consensus definition of late presentation used in this study is available through the HIV in Europe initiative
- Patient stories about living with HIV/AIDS are available through Avert and through the nonprofit website Healthtalkonline