

## National Reference Centres

Influenza · Measles, Mumps, Rubella · Poliomyelitis and Enteroviruses · Salmonellosis and Other Enteric Pathogens · Staphylococci and Enterococci

## Consultant Laboratories

Bacillus anthracis · Neurotoxin-Producing Clostridia · Cryptococcosis and Rare Systemic Mycoses · Electron Microscopic Diagnostics in Infectious Diseases · Listeria · Noroviruses · Poxviruses · Respiratory Syncytial Viruses, Parainfluenza Viruses, Metapneumoviruses · Rotaviruses · Tularemia

## Cooperations with the World Health Organisation (WHO)

WHO Regional Reference Laboratory for Poliomyelitis · WHO Regional Reference Laboratory for Measles and Rubella · WHO Collaborating Centre for Emerging Infections and Biological Threats

## Selected Publications

Bundesgesundheitsblatt (Journal for Public Health, Health Research and Health Protection), co-editor · Epidemiological Bulletin · Journal of Health Monitoring · Publications on Federal Health Reporting · Epidemiological Yearbook of Notifiable Infectious Diseases · RKI fact sheets for physicians · Publications in peer-reviewed scientific journals

## Scientific Committees

Advisory Committee of the German Centre for Cancer Registry Data · Central Ethics Committee for Stem Cell Research · Commission for Hospital Hygiene and Infection Prevention (KRINKO) · Commission on Anti-Infectives, Resistance and Therapy (ART) · Commission on Genetic Testing · Committee for Environmental Medicine · Committee for Health Reporting and Health Monitoring · Competence and Treatment Centres for Highly Contagious and Life-Threatening Diseases (STAKOB) · Editorial Board of the Bundesgesundheitsblatt · National Advisory Committee Blood · National Certification Committee for Polio Eradication – Germany (NCC) · National Verification Committee for Measles and Rubella Elimination in Germany · RKI Expert Advisory Board on Influenza · Scientific Advisory Board for Public Health Microbiology · The German Standing Committee on Vaccination (STIKO)

## Staff

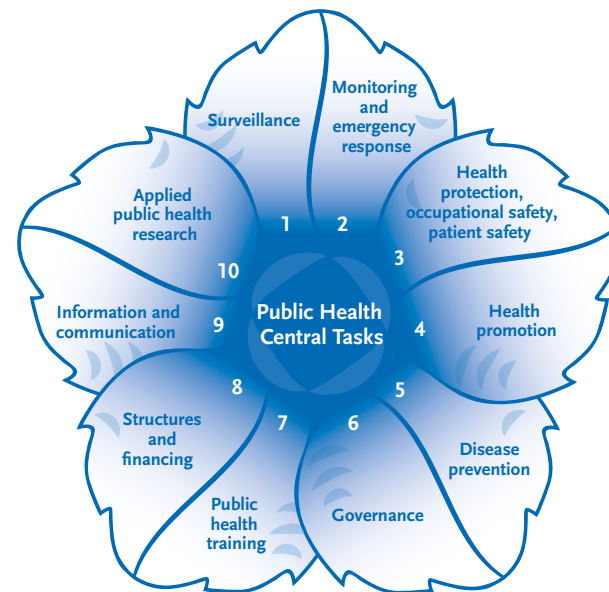
About 1.150 employees from 90 different professions, including 450 scientists (graduate students and trainees incl.)

## Locations

Nordufer 20 | 13353 Berlin-Wedding (main site)  
Seestraße 10 | 13353 Berlin-Wedding  
General-Pape-Straße 62-66 | 12101 Berlin-Tempelhof  
Burgstraße 37 | 38855 Wernigerode

## Contact

www.rki.de/EN  
🐦 @rki\_de  
E-mail: zentrale@rki.de  
phone: +49 30 18 754-0



Robert Koch Institute, Berlin 2017  
Editor: Marieke Degen  
Production: RKI printery  
Cover: Neisseria meningitidis (electron microscopy), RKI



The Robert Koch Institute is a Federal Institute within the portfolio of the German Federal Ministry of Health

ROBERT KOCH INSTITUT



THE PUBLIC HEALTH INSTITUTE

The Robert Koch Institute  
at a Glance

President: Prof. Dr. Lothar H. Wieler

Vice President: Priv. Doz. Dr. Lars Schaade

## Main Areas of Activity at RKI

### Department of Infectious Diseases

Head: Prof. Dr. Martin Mielke

- Public health microbiology
  - molecular epidemiology of pathogens
  - pathogenetic and resistance mechanisms; pathogen-host-interaction
- Healthcare-associated infections and hospital hygiene
  - prevention and control of healthcare-associated infections
  - inactivation of infectious agents/tolerance
- Viral infections
  - viral infections in newborns and immunosuppressed patients
  - HIV, retrovirology
  - influenza and other respiratory viruses
  - measles, mumps, rubella
  - herpesviruses
  - poliovirus and other enteroviruses
  - gut-associated viruses (norovirus, rotavirus)
  - hepatitis viruses
- Bacterial infections
  - healthcare-associated infections and antimicrobial resistance
  - salmonella and other enteric pathogens (EHEC, Listeria)
  - legionella
  - chlamydia and other sexually transmitted bacterial pathogens
- Fungal and parasitic infections
  - diagnosis of invasive mycotic infections
- Persistent infections

### Department of Epidemiology and Health Reporting

Head: Dr. Bärbel-Maria Kurth

- Nationwide continuous health monitoring via the following three components:
  - KiGGS: study on the health of children and adolescents in Germany (longitudinal study)
  - DEGS: study on the health of adults in Germany (longitudinal study)
  - GEDA: regular population survey on health-related issues (cross-sectional study)
- Federal Health Reporting
  - comprehensive reports on health in Germany
  - Journal of Health Monitoring

- Epidemiological research amongst others on
  - health and care of the elderly
  - risk factors of common non-communicable diseases (lifestyle, environment, nutrition, social determinants)
  - prevention concepts and their evaluation
- German Centre for Cancer Registry Data
  - pooling and quality control of data from regional cancer registries
  - regular publication of a verified overall dataset
  - analyses on cancer incidence, prevalence and survival
  - reporting on cancer in Germany
- Network of public health players in Germany

### Department of Infectious Disease Epidemiology

Head: Dr. Osamah Hamouda

- National surveillance of infectious diseases
  - notifiable diseases
  - early warning, risk assessment, reporting
- Focal point for infectious disease control
  - German public health service
  - international Health Regulations
  - ECDC, WHO, European Commission
- Research in infectious disease epidemiology
- Investigation of outbreaks on a national and international level
- Disease prevention
  - immunisation strategies
  - influenza pandemic preparedness
  - prevention of HIV/AIDS
- Training in infectious disease epidemiology
  - courses for public health professionals
  - Postgraduate Training for Applied Epidemiology (PAE), M. Sc. in Applied Epidemiology with Charité – Universitätsmedizin Berlin
- Epidemiologic assessment and analysis
  - vaccine-preventable diseases
  - sexually transmittable diseases
  - foodborne diseases
  - zoonotic diseases
  - respiratory infections
  - antimicrobial resistance

### Centre for Biological Threats and Special Pathogens (ZBS)

Head: Priv. Doz. Dr. Lars Schaade

- Health threats caused by highly pathogenic and relevant bioterrorist biological agents (microbes and toxins): identification, assessment, support of management
- Federal Information Centre for Biological Threats and Special Pathogens (IBBS)

- Cooperation with national and international partners in the field of biological security
- Diagnostics and rapid diagnostics
- Providing support during international health emergencies
- Research in diagnostics, epidemiology, pathogenesis and countermeasures of highly pathogenic agents
- Planning and operating a biosafety level 4 laboratory (BSL-4)

### Methodology and Research Infrastructure (MF)

Head: Prof. Dr. Lothar H. Wieler

- Bioinformatics: developing new methods for data analysis for high-throughput processes, machine learning
- Genome sequencing, next generation sequencing, mass spectrometry
- Provision of the appropriate housing and handling of laboratory animals, refinement and replacement of animals tests

### Project Groups

- Immune defense mechanisms
- Acinetobacter baumannii
- Emerging zoonoses
- Epidemiological modelling of infectious diseases
- Virulence factors in salmonella and campylobacter

### Junior Research Groups

- Microbial genomics

### Global Health and Biosecurity (GGBS)

Head: Dr. Walter Biederbick

- Promoting global health by technical assistance and collaborative research
- Carrying out projects on biological security on a bi-national and international level

### Regulatory Authority for the Import and Use of Human Embryonic Stem Cells

Head: Dr. Peter Löser

- Review of applications according to the German Stem Cell Act
- Registry on human embryonic stem cell (hESC) research in Germany