



Emergency Department Situation Report

Reporting date: 21-10-2020

Reporting period: 01-11-2019 – 18-10-2020

SUMO is a system that has been developed and implemented at the Robert Koch Institute. It processes and provides health data for surveillance and public health research. The Emergency Department Situation Report presents data from the routine documentation of selected emergency departments in Germany, and shows the current emergency department utilisation.

WEEKLY OVERVIEW

Number of admissions in this week: **4,841**

Change compared to last week: **-3.8%**

Change compared to mean of last year: **-14.9%**

DATA SOURCE

Emergency departments: in total 8 emergency departments in Germany, located in the federal states Baden-Wuerttemberg, Bavaria, Lower Saxony, und Saxony

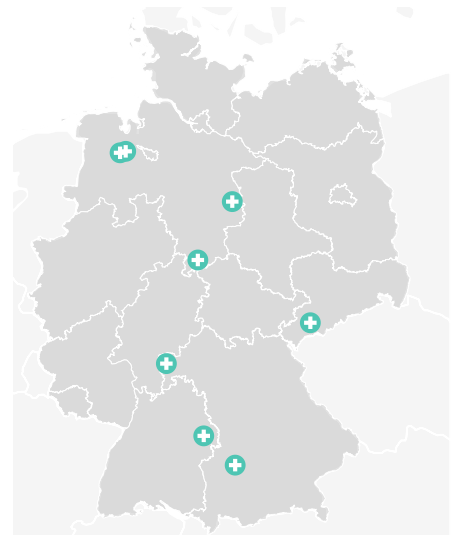
Emergency department attendances: 32 to 256 attendances per day, per emergency department (mean in 2019)

Level of care:

Basic emergency care: 0 departments

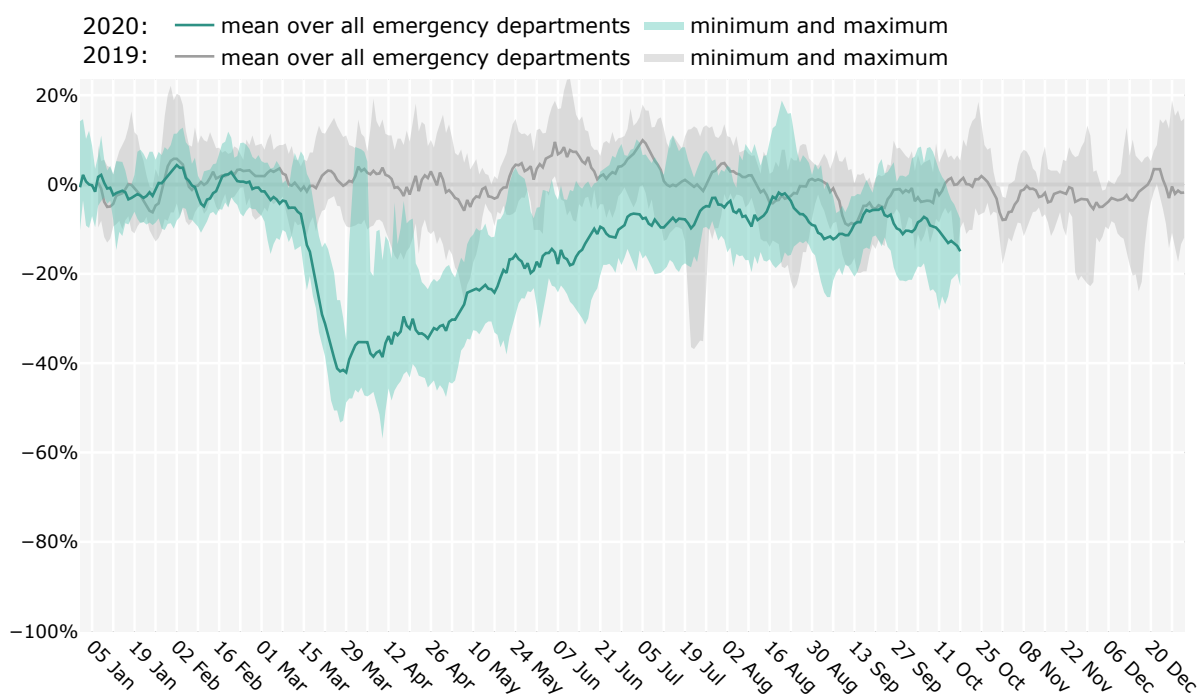
Extended emergency care: 4 departments

Comprehensive emergency care: 4 departments



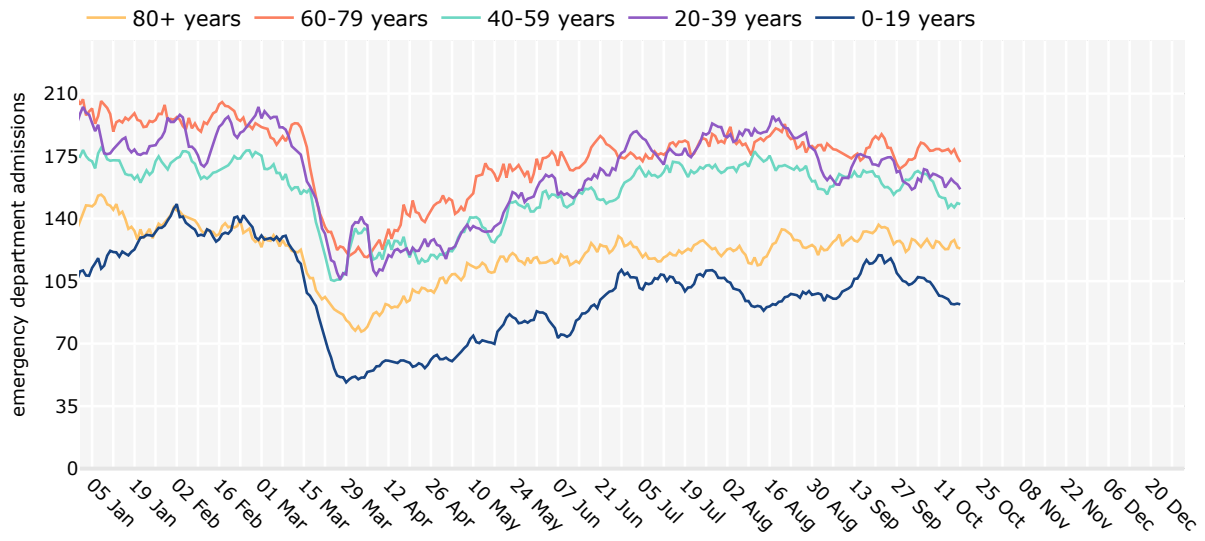
EMERGENCY DEPARTMENT ADMISSIONS

Relative deviation of the number of admissions, compared to mean in 2019 per emergency department

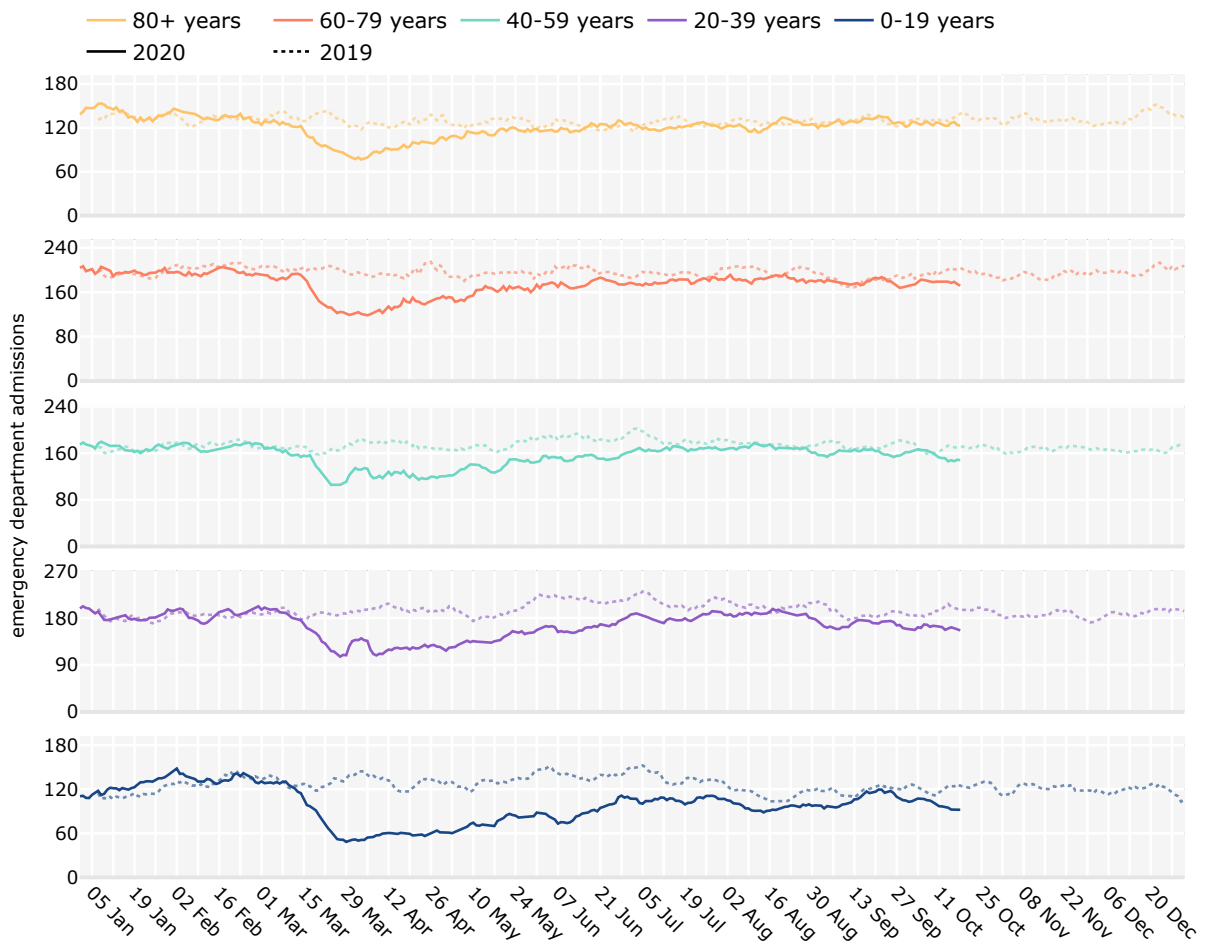


AGE

Overview of all age groups in 2020

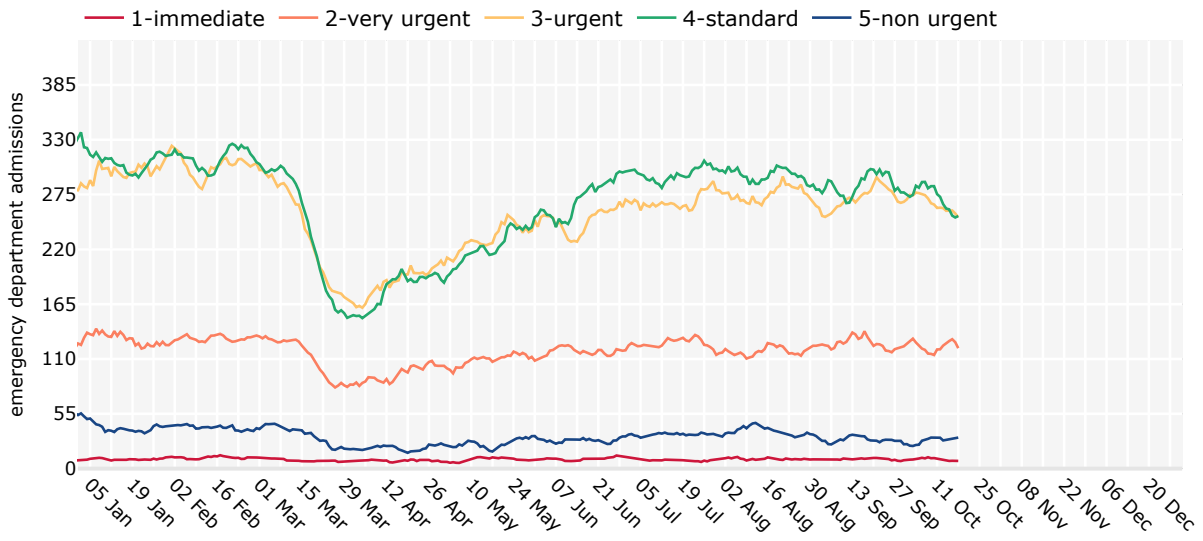


Comparison of all age groups with last year

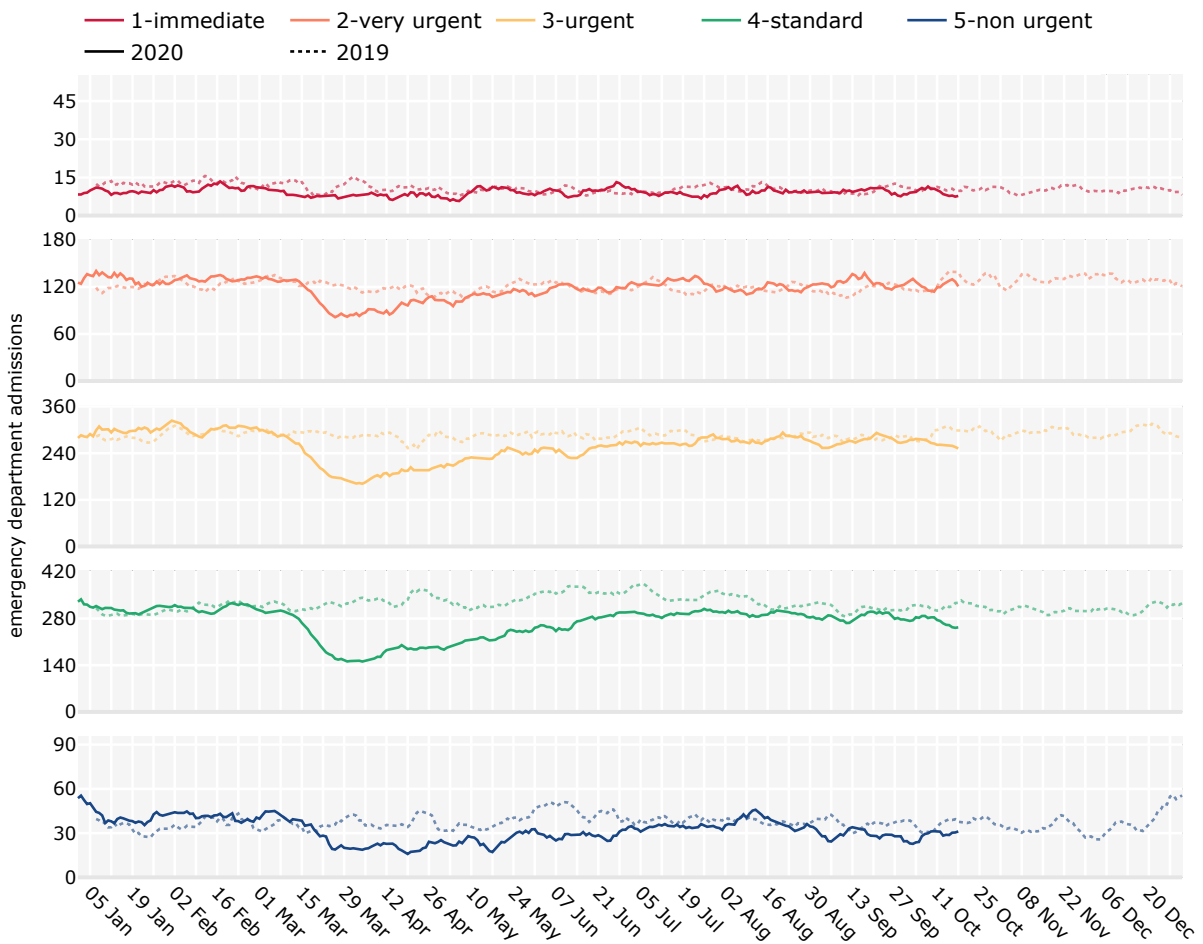


TRIAGE

Overview of all triage levels in 2020

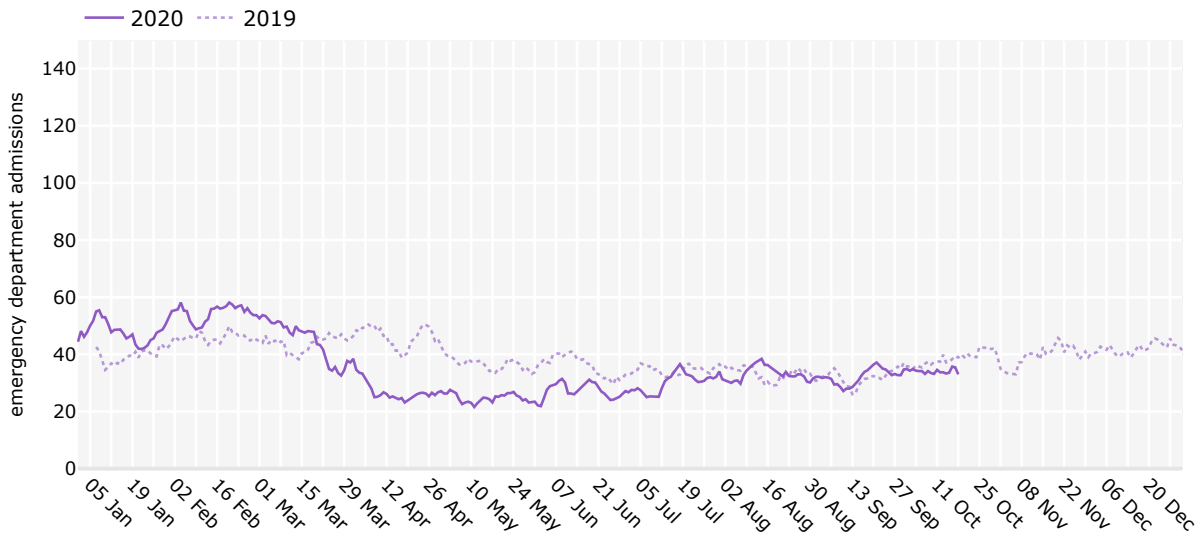


Comparison of all triage levels with last year

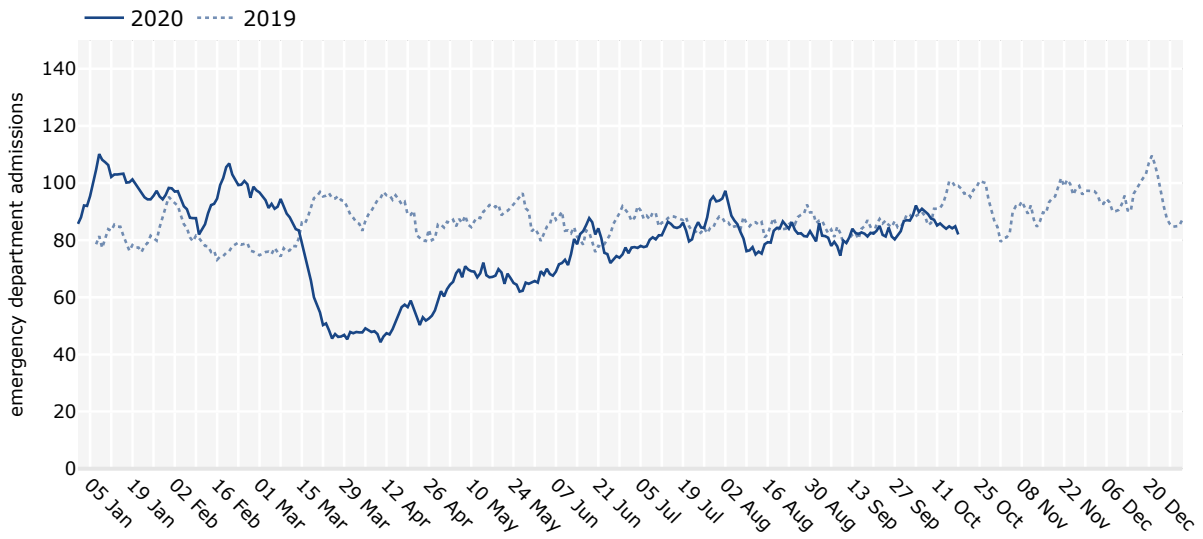


CHIEF COMPLAINT

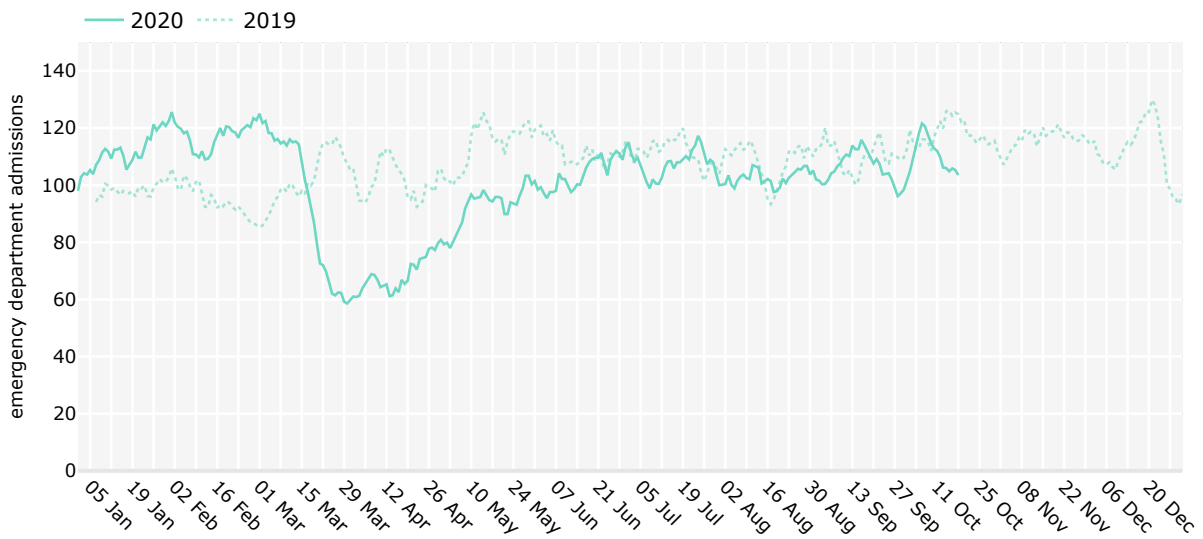
Respiratory chief complaints



Cardiovascular chief complaints



Neurological chief complaints



DETAILS

The inclusion of emergency departments is based on voluntary participation. All emergency departments with continuous data transfer within the reporting period (at least one admission per day) are included in this report. Reported figures can therefore vary between reports. All time series show a 7-day moving average (mean of all values on one day and the previous 6 days) in the current and last year. In the weekly overview and the figure "Emergency department admissions", the comparison to the last year represents the average over the changes in each emergency department compared to its mean in 2019.

The Emergency Severity Index (ESI) or the Manchester Triage System (MTS) were used for triage. The reported chief complaints were coded according to the Canadian Emergency Department Information System – Presenting Complaint List (CEDIS-PCL). The following groups were selected: CV – cardiovascular (CEDIS-PCL codes 001-012), NC – neurological (CEDIS-PCL codes 401-411) and RC – respiratory (CEDIS-PCL codes 651-661).

Changes over time can be caused both by real changes of the emergency department utilisation, as well as several other reasons, such as structural changes in the emergency department. The data should neither be interpreted without prior direct communication with the emergency departments, nor should they form the sole basis for action.

PARTNERSHIP

The report has been established in close cooperation with the AKTIN Emergency Department Data Registry and with the ESEG project partners. We want to especially thank the participating emergency departments for sharing their data.

CONTACT

SUMO@rki.de



www.rki.de/sumo



Robert Koch Institute, Nordufer 20, 13353 Berlin, Germany

**Suggested citation:**

Robert Koch Institute: Routine health data in real-time (SUMO). Emergency Department Situation Report (SitRep) 21-10-2020. DOI 10.25646/7185.