



## Emergency Department Situation Report

**Reporting date:** 16-06-2021

**Reporting period:** 01-01-2019 – 13-06-2021

SUMO is a system that has been developed and implemented at the Robert Koch Institute. It processes and provides health data for surveillance and public health research. The Emergency Department Situation Report presents data from the routine documentation of selected emergency departments in Germany, and shows the current emergency department utilisation.

### WEEKLY OVERVIEW

Number of admissions in this week: **13,052**

Change compared to last week: **+6.7%**

Change compared to mean in 2019: **+1.8%**

### DATA SOURCE

**Emergency departments:** in total 18 emergency departments in Germany, located in the federal states Baden-Wuerttemberg, Bavaria, Berlin, Brandenburg, Hesse, Lower Saxony, North Rhine-Westphalia, Rhineland-Palatinate, Saxony, and Saxony-Anhalt

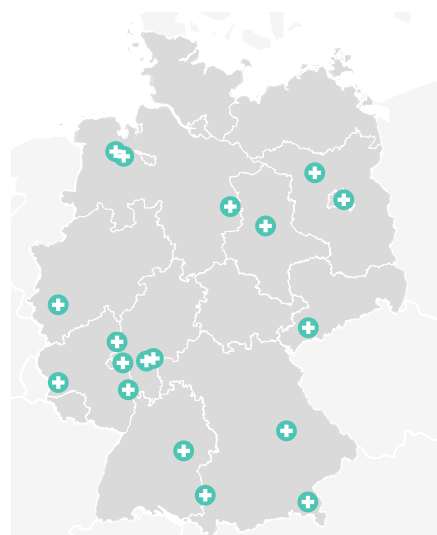
**Emergency department attendances:** 32 to 164 attendances per day, per emergency department (mean in 2019)

### Level of care:

Basic emergency care: 1 departments

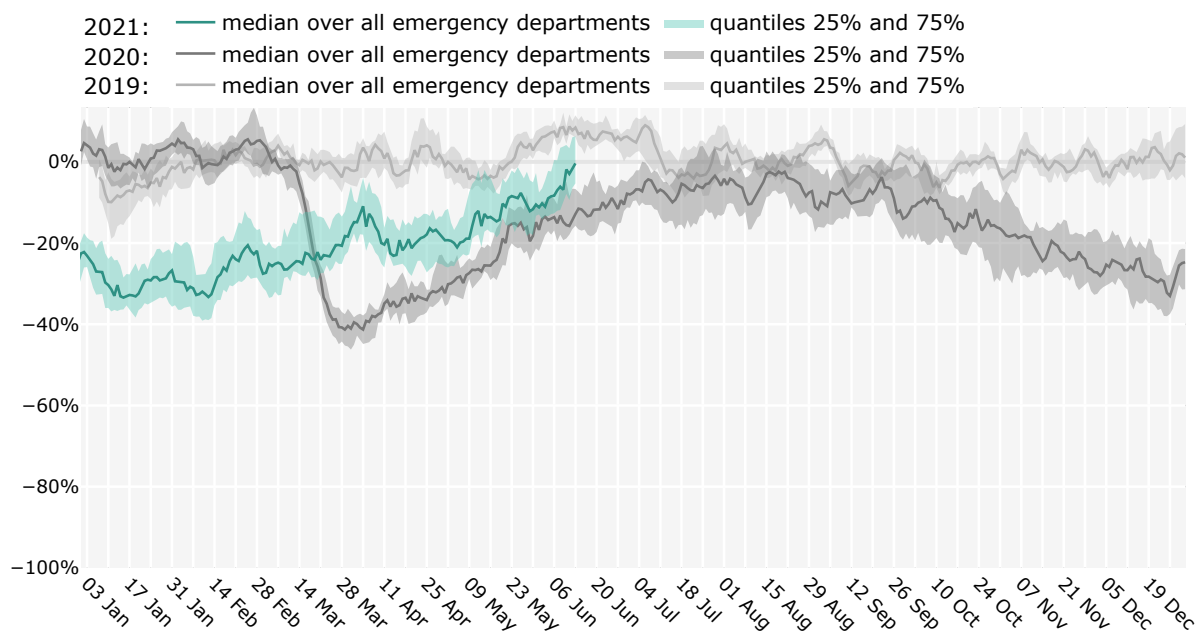
Extended emergency care: 5 departments

Comprehensive emergency care: 12 departments



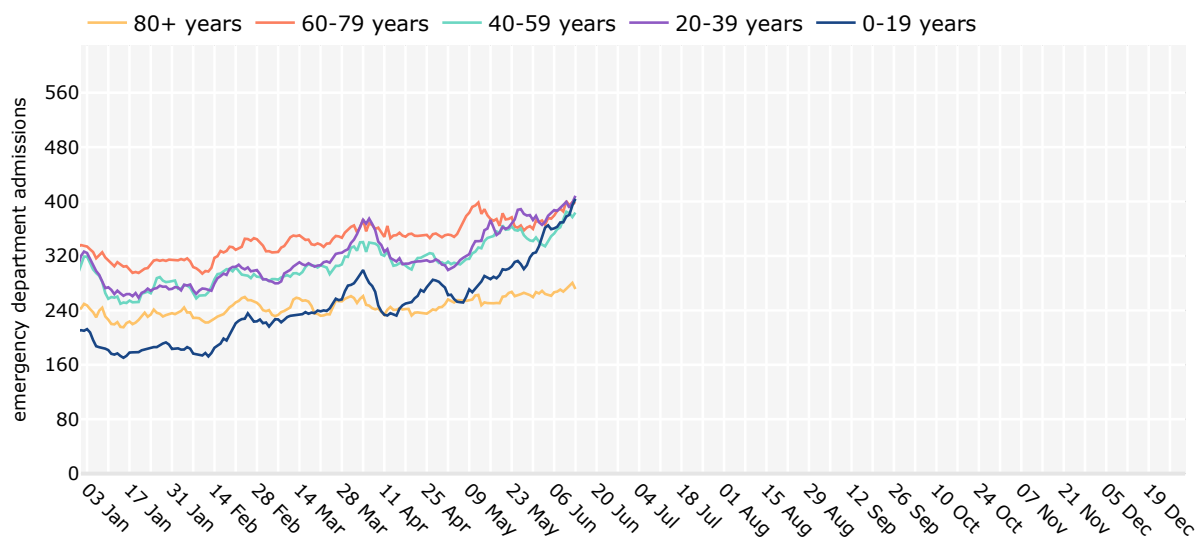
### EMERGENCY DEPARTMENT ADMISSIONS

Relative deviation of the number of admissions, compared to the mean in the pre-pandemic year 2019 per emergency department

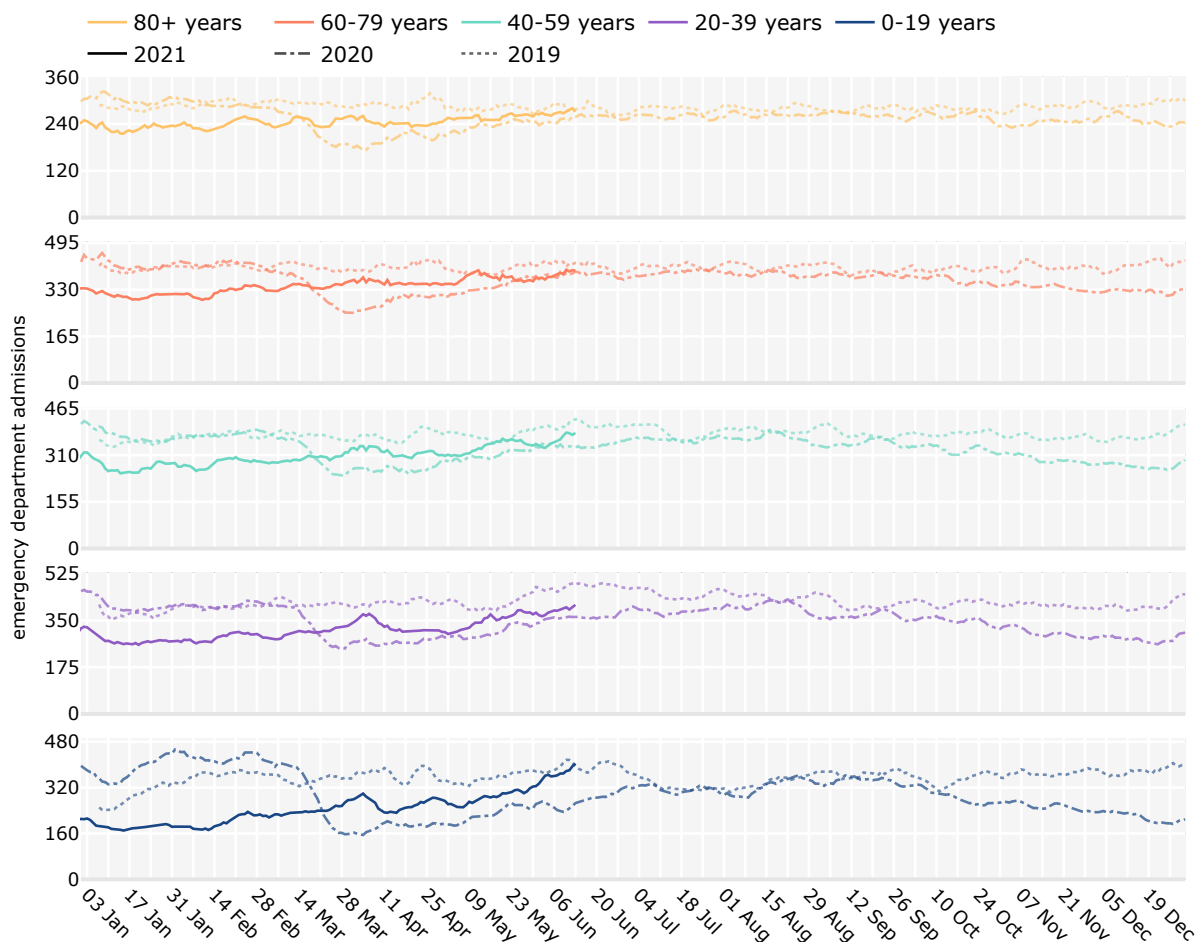


AGE

Overview of all age groups in 2021

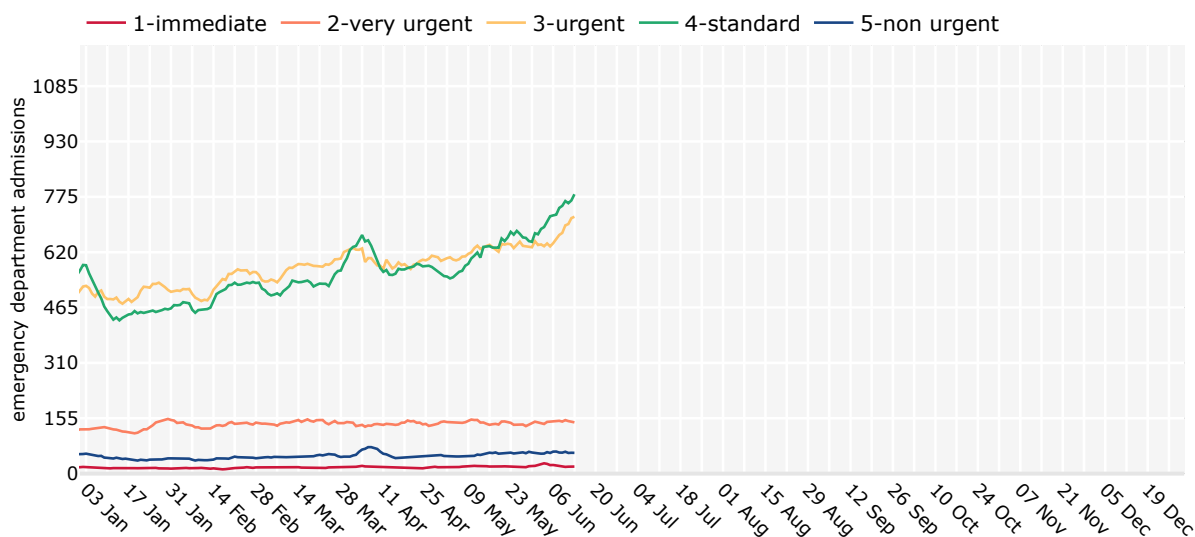


Comparison of all age groups with last years

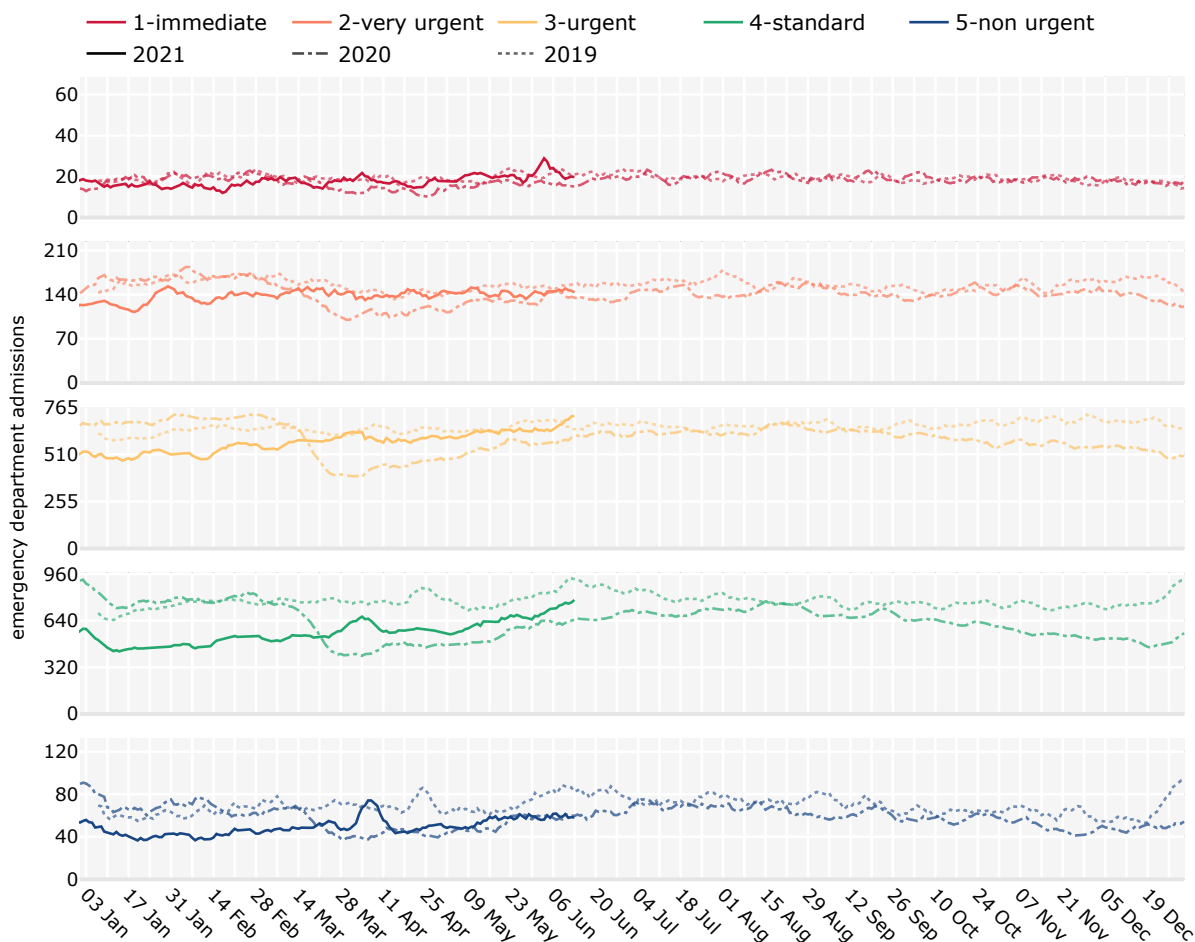


**TRIAGE**

**Overview of all triage levels in 2021**



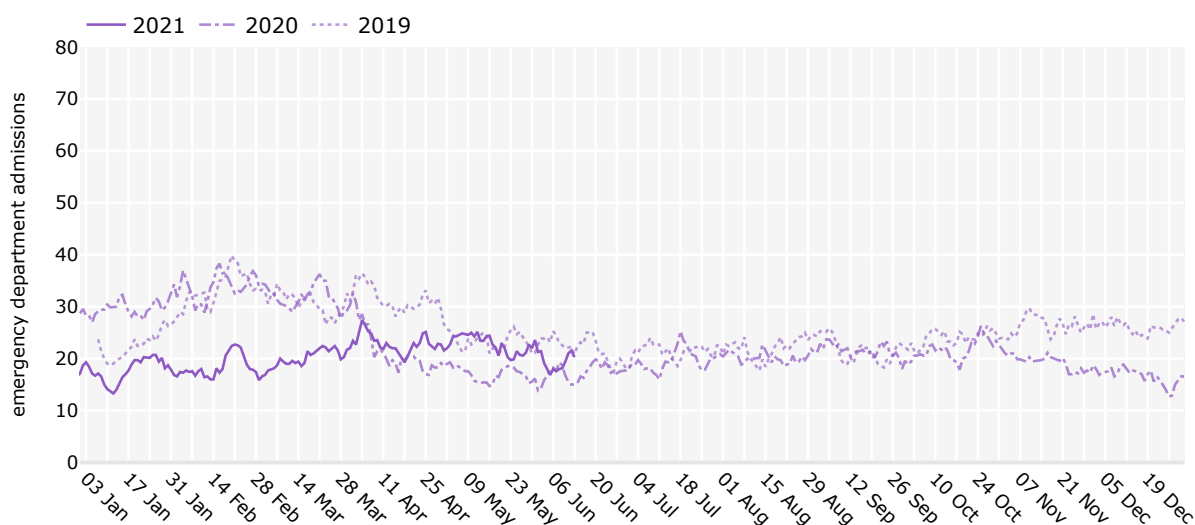
**Comparison of all triage levels with last years**



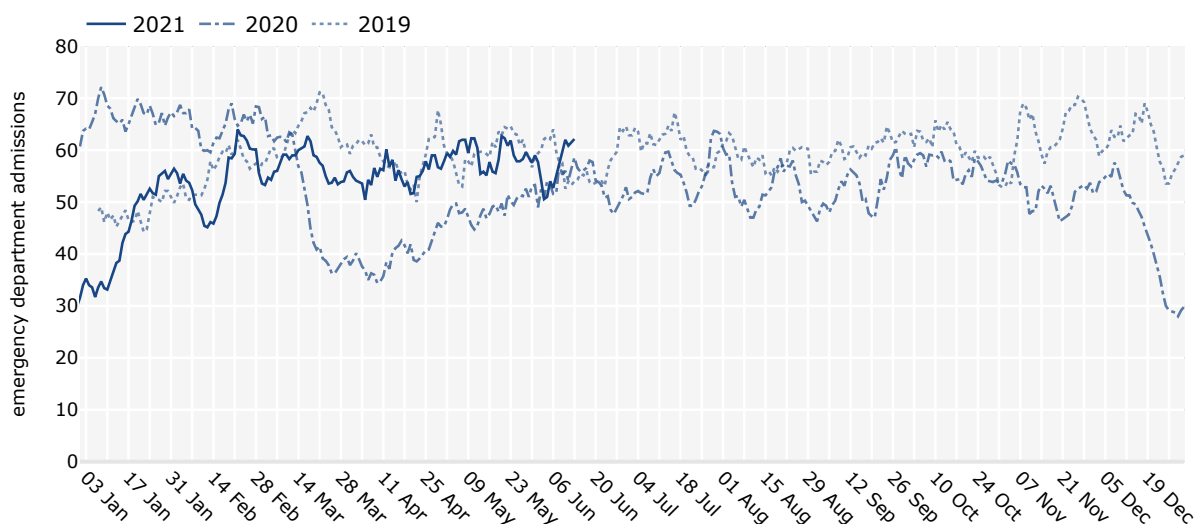
Based on 18 out of 18 emergency departments, triage is available for 91.0% of the admissions and displayed here.

## CHIEF COMPLAINT

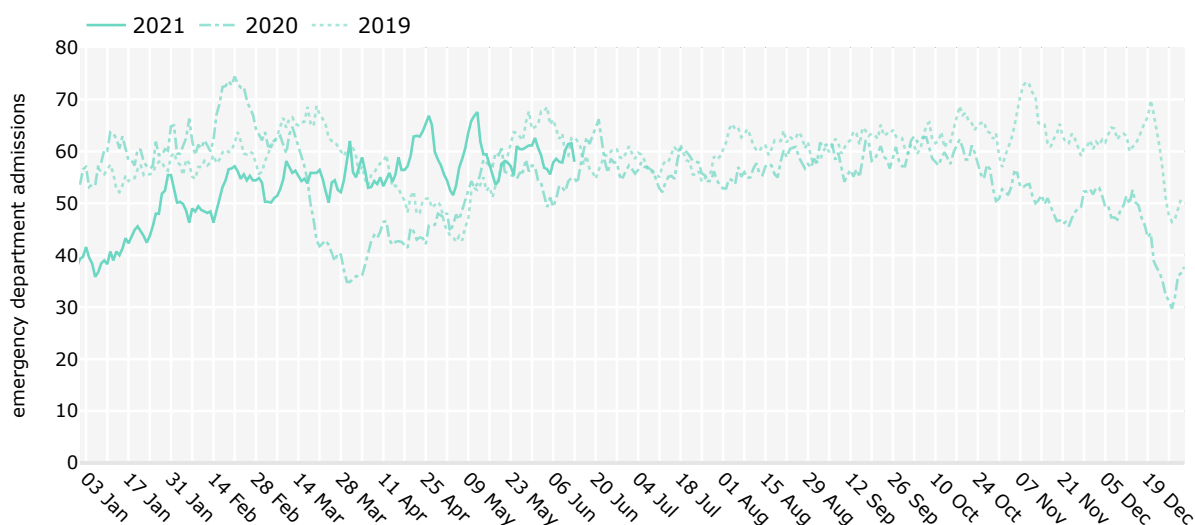
### Respiratory chief complaints



### Cardiovascular chief complaints



### Neurological chief complaints



In 7 out of 18 emergency departments the chief complaint is available for 27.3% of admissions. The selected groups represent 29.7% of the admissions with a chief complaint.

## DETAILS

The inclusion of emergency departments is based on voluntary participation. All emergency departments with continuous data transfer within the reporting period (at least one admission per day) are included in this report. Reported figures can therefore vary between reports. All time series show a 7-day moving average (mean of all values on one day and the previous 6 days) in the current and the last years. In the weekly overview and the figure "Emergency department admissions", the comparison to the last year represents the average over the changes in each emergency department compared to its mean in 2019. Because the number of emergency department admissions in 2020 is heavily influenced by the COVID-19 pandemic and associated measures, data from 2021 are compared to the pre-pandemic year of 2019.

The Emergency Severity Index (ESI) or the Manchester Triage System (MTS) were used for triage. The reported chief complaints were coded according to the Canadian Emergency Department Information System – Presenting Complaint List (CEDIS-PCL). The following groups were selected: CV – cardiovascular (CEDIS-PCL codes 001-012), NC – neurological (CEDIS-PCL codes 401-411) and RC – respiratory (CEDIS-PCL codes 651-661).

Changes over time can be caused both by real changes of the emergency department utilisation, as well as several other reasons, such as structural changes in the emergency department. The data should neither be interpreted without prior direct communication with the emergency departments, nor should they form the sole basis for action.

## PARTNERSHIP

The report has been established in close cooperation with the AKTIN Emergency Department Data Registry and with the ESEG project partners. We want to especially thank the participating emergency departments for sharing their data.



## CONTACT



SUMO@rki.de



[www.rki.de/sumo](http://www.rki.de/sumo)



Robert Koch Institute, Nordufer 20, 13353 Berlin, Germany

### Suggested citation:

Robert Koch Institute: Routine health data in real-time (SUMO). Emergency Department Situation Report (SitRep) 16-06-2021. DOI 10.25646/8573.