



Letter from correspondence

Surveillance of endemic human Coronaviruses in Germany, 2019/2020

Barbara Biere*, Djin-Ye Oh, Thorsten Wolff, Ralf Dürrwald

Unit 17: Influenza and Other Respiratory Viruses | German National Influenza Center, Department of Infectious Diseases, Robert Koch Institute, Seestr. 10, D-13353 Berlin, Germany

ARTICLE INFO

Article History:

Received 25 August 2021

Revised 29 September 2021

Accepted 18 October 2021

Available online 4 November 2021

The COVID-19 pandemic has renewed interest in endemic human coronaviruses (HCoV), which are responsible for an estimated 5-10% of acute respiratory infections (ARI) in temperate climate zones [1]. The epidemiological profiles of these agents may hold important clues to an anticipated future where SARS-CoV-2 has transitioned to endemicity [2], as they share physicochemical properties and route of transmission. However, due to an underappreciation of their clinical and epidemiological impact, systematic surveillance data describing the epidemiology of endemic coronaviruses NL63, HKU1, OC43 and 229E and their susceptibility to non-pharmaceutical interventions (NPI) are currently sparse. This led us to retrospectively examine our 2019/20 sample compilation, which was collected for the purpose of national surveillance of respiratory viruses in Germany as described earlier [3], providing insight into the epidemiology of endemic coronavirus infections at the German national scale for the first time.

A total of 4,375 specimens from children and adults, who had presented with acute respiratory symptoms to a sentinel physician between October 2019 and September 2020, were examined by qPCR [see [supplementary information online](#)]. Endemic coronaviruses of all four types were detected in 194 (4.4%) of the samples (Figure 1a). They were detected in all age groups from newborns to the elderly (Figure 1b). HKU1 was predominant, representing more than 55% of total coronavirus detections and peaking in December, when almost 8% of all samples contained this virus. The early HKU1 wave was followed by a less pronounced NL63 wave, indicating substantial spread with up to nearly 4% positive results in March. OC43 showed a

diffuse, low level circulation between October and March, with a slight accentuation in early winter months, and 229E was detected only sporadically in winter and early spring. The non-pharmaceutical interventions (NPIs) implemented in March/April 2020 to curb SARS-CoV-2 spread [3] did appear to contribute to the decrease of endemic coronavirus detections in April, and only sporadic detections in May and June were observed throughout the remainder of the season 2019/2020. Our data indicate frequent circulation of endemic human coronaviruses from late autumn to spring, with a sharp increase in autumn and peaking from December to April, thus confirming recent reports on the temporal HCoV circulation patterns in temperate regions with a clear preponderance during the winter season [1,4,5]. Also, the decrease of virus circulation after the introduction of NPIs is compatible with the pattern observed for other respiratory viruses, although other causes cannot be excluded, as discussed earlier [3]. More insight into the natural epidemiology of these agents will be gained by their systematic surveillance at regional, national and even global levels in the future.

Contributors

BB wrote the manuscript with support from DYO and RD; BB is responsible for data acquisition; BB and DYO analysed the data; RD is responsible for the virological section of the sentinel system; TW and RD supervised the project.

Declaration of interests

The authors declare that no competing interests exist.

Acknowledgements

We thank all doctors participating in the national AGI surveillance and Mareen Adam, Bettina Mischke und Anneliese Schindel for outstanding technical assistance.

DOI of original article: <http://dx.doi.org/10.1016/j.lanep.2021.100112>.

* Corresponding Author: Barbara Biere, Robert Koch Institute, Unit 17: Influenza and Other Respiratory Viruses, Seestr. 10, D-13353 Berlin, Germany, phone: +49 30 17543 2383. E-mail address: biereb@rki.de (B. Biere).

<https://doi.org/10.1016/j.lanep.2021.100262>

2666-7762/© 2021 The Author(s). Published by Elsevier Ltd. This is an open access article under the CC BY license (<http://creativecommons.org/licenses/by/4.0/>)

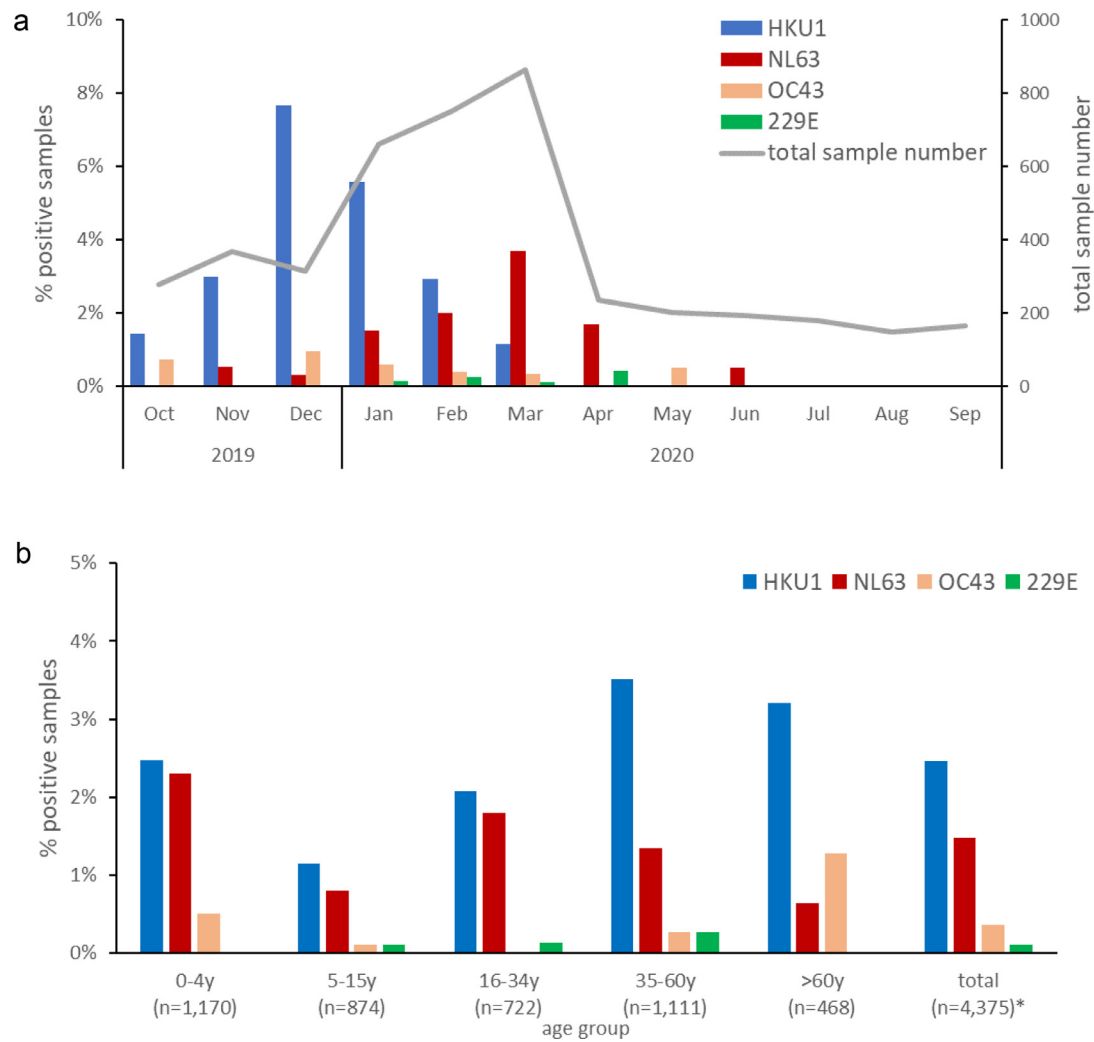


Figure 1. (a) virus detections for the coronavirus types per calendar month and (b) virus detections per predefined AGI age group (* including 30 samples of unknown age group)

Supplementary materials

Supplementary material associated with this article can be found, in the online version, at doi: [10.1016/j.lanepe.2021.100262](https://doi.org/10.1016/j.lanepe.2021.100262).

References

- [1] Park S, Lee Y, Michelow IC, Choe YJ. Global Seasonality of Human Coronaviruses: A Systematic Review. *Open forum infectious diseases* 2020;7(11):ofaa443.
- [2] Kissler SM, Tedijanto C, Goldstein E, Grad YH, Lipsitch M. Projecting the transmission dynamics of SARS-CoV-2 through the postpandemic period. *Science* 2020;368(6493):860–8.

- [3] Oh DY, Buda S, Biere B, et al. Trends in respiratory virus circulation following COVID-19-targeted nonpharmaceutical interventions in Germany, January - September 2020: Analysis of national surveillance data. *The Lancet regional health Europe* 2021;6:100112.
- [4] Li Y, Wang X, Nair H. Global Seasonality of Human Seasonal Coronaviruses: A Clue for Postpandemic Circulating Season of Severe Acute Respiratory Syndrome Coronavirus 2? *J Infect Dis* 2020;222(7):1090–7.
- [5] Komabayashi K, Seto J, Matoba Y, et al. Seasonality of Human Coronavirus OC43, NL63, HKU1, and 229E Infection in Yamagata, Japan, 2010-2019. *Japanese journal of infectious diseases* 2020;73(5):394–7.